

RBM1A1 Rabbit pAb

Catalog No.: A18376

Basic Information

Observed MW

Refer to figures

Calculated MW

56kDa

Category

Primary antibody

Applications

ELISA, IHC-P, IF/ICC

Cross-Reactivity

Human, Mouse, Rat

Background

This gene encodes a protein containing an RNA-binding motif in the N-terminus and four SRGY (serine, arginine, glycine, tyrosine) boxes in the C-terminus. This protein is thought to function as a splicing regulator during spermatogenesis. Multiple closely related paralogs of this gene are found in a gene cluster in the AZFb azoospermia factor region of chromosome Y. Most of these related copies are thought to be pseudogenes, though several likely encode functional proteins.

Recommended Dilutions

IHC-P	1:50 - 1:200
IF/ICC	1:50 - 1:200

Immunogen Information

Gene ID

5940

Swiss Prot

P0DJD3

Immunogen

Recombinant fusion protein containing a sequence corresponding to amino acids 90-300 of human RBMY1A1 (NP_005049.1).

Synonyms

RBM; RBM1; RBM2; RBMY; YRRM1; YRRM2; RBMY1C; RBMY1A1

Contact

☎ | 400-999-6126

✉ | cn.market@abclonal.com.cn

🌐 | www.abclonal.com.cn

Product Information

Source

Rabbit

Isotype

IgG

Purification

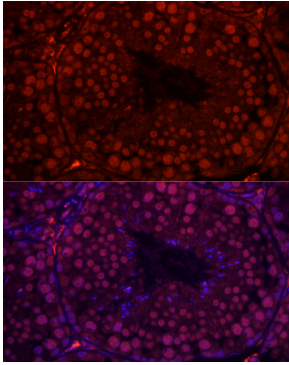
Affinity purification

Storage

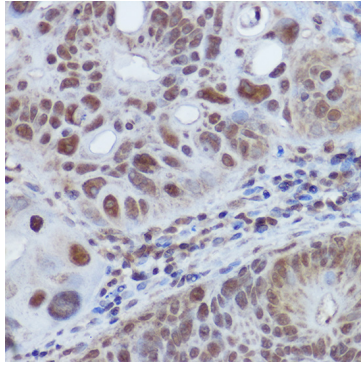
Store at -20°C. Avoid freeze / thaw cycles.

Buffer: PBS with 0.01% thimerosal, 50% glycerol, pH7.3.

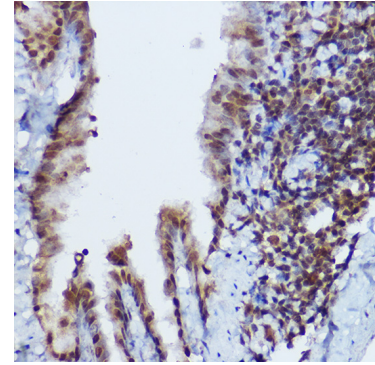
Validation Data



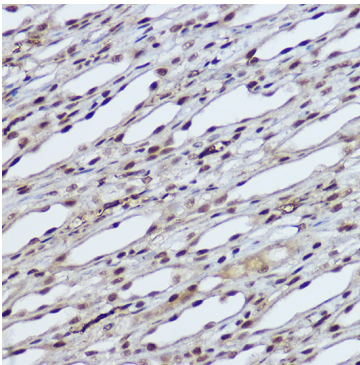
Immunofluorescence analysis of paraffin-embedded mouse testis using RBMY1A1 Rabbit pAb (A18376) at dilution of 1:100 (40x lens). Secondary antibody: Cy3 Goat Anti-Rabbit IgG (H+L) (AS007) at 1:500 dilution. Blue: DAPI for nuclear staining.



Immunohistochemistry analysis of paraffin-embedded human colon carcinoma using RBMY1A1 Rabbit pAb (A18376) at dilution of 1:100 (40x lens). Perform high pressure antigen retrieval with 10 mM citrate buffer pH 6.0 before commencing with IHC staining protocol.



Immunohistochemistry analysis of paraffin-embedded mouse lung using RBMY1A1 Rabbit pAb (A18376) at dilution of 1:100 (40x lens). Perform high pressure antigen retrieval with 10 mM citrate buffer pH 6.0 before commencing with IHC staining protocol.



Immunohistochemistry analysis of paraffin-embedded rat kidney using RBMY1A1 Rabbit pAb (A18376) at dilution of 1:100 (40x lens). Perform high pressure antigen retrieval with 10 mM citrate buffer pH 6.0 before commencing with IHC staining protocol.