

SLC5A3 Rabbit pAb

Catalog No.: A18380

Basic Information

Observed MW

80kDa

Calculated MW

80kDa

Category

Primary antibody

Applications

WB, ELISA

Cross-Reactivity

Human, Mouse, Rat

Background

Enables potassium channel regulator activity and transmembrane transporter binding activity. Predicted to be involved in inositol metabolic process; monosaccharide transmembrane transport; and myo-inositol import across plasma membrane. Predicted to act upstream of or within several processes, including peripheral nervous system development; positive regulation of reactive oxygen species biosynthetic process; and regulation of respiratory gaseous exchange. Located in plasma membrane. Part of perinuclear region of cytoplasm.

Recommended Dilutions

WB 1:500 - 1:2000

ELISA Recommended starting concentration is 1 µg/mL. Please optimize the concentration based on your specific assay requirements.

Immunogen Information

Gene ID

6526

Swiss Prot

P53794

Immunogen

Recombinant protein (or fragment). This information is considered to be commercially sensitive.

Synonyms

BCW2; SMIT; SMIT1; SMIT2; SLC5A3

Contact

☎ | 400-999-6126

✉ | cn.market@abclonal.com.cn

🌐 | www.abclonal.com.cn

Product Information

Source

Rabbit

Isotype

IgG

Purification

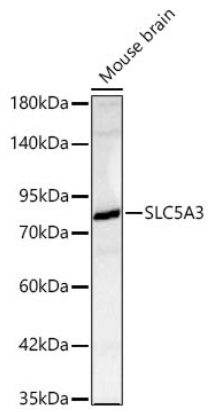
Affinity purification

Storage

Store at -20°C. Avoid freeze / thaw cycles.

Buffer: PBS containing 50% glycerol, preserved with proclin300 or sodium azide (as specified on the Certificate of Analysis), pH 7.3.

Validation Data



Western blot analysis of lysates from Mouse brain using SLC5A3 Rabbit pAb (A18380) at 1:2000 dilution.
Secondary antibody:(AS014) at 1:10000 dilution.
Lysates/proteins: 25 µg per lane.
Blocking buffer: 3% nonfat dry milk in TBST.
Detection: ECL Basic Kit (RM00020).
Exposure time: 5s.