

SLC8A3 Rabbit pAb

Catalog No.: A18381

Basic Information

Observed MW

110kDa

Calculated MW

103kDa

Category

Primary antibody

Applications

ELISA, WB

Cross-Reactivity

Mouse

Background

This gene encodes a member of the sodium/calcium exchanger integral membrane protein family. Na⁺/Ca²⁺ exchange proteins are involved in maintaining Ca²⁺ homeostasis in a wide variety of cell types. The protein is regulated by intracellular calcium ions and is found in both the plasma membrane and intracellular organellar membranes, where exchange of Na⁺ for Ca²⁺ occurs in an electrogenic manner. Alternative splicing has been observed for this gene and multiple variants have been described.

Recommended Dilutions

WB 1:500 - 1:1000

Immunogen Information

Gene ID

6547

Swiss Prot

P57103

Immunogen

A synthetic peptide corresponding to a sequence within amino acids 550-650 of human SLC8A3 (NP_489479.1).

Synonyms

NCX3; SLC8A3

Contact

☎ | 400-999-6126

✉ | cn.market@abclonal.com.cn

🌐 | www.abclonal.com.cn

Product Information

Source

Rabbit

Isotype

IgG

Purification

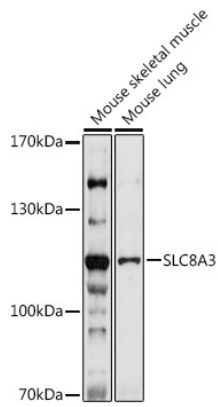
Affinity purification

Storage

Store at -20°C. Avoid freeze / thaw cycles.

Buffer: PBS with 0.01% thimerosal, 50% glycerol, pH7.3.

Validation Data



Western blot analysis of various lysates using SLC8A3 Rabbit pAb (A18381) at 1:1000 dilution.
Secondary antibody: HRP Goat Anti-Rabbit IgG (H+L) (AS014) at 1:10000 dilution.
Lysates/proteins: 25µg per lane.
Blocking buffer: 3% nonfat dry milk in TBST.
Detection: ECL Enhanced Kit (RM00021).
Exposure time: 120s.