

SMC3 Rabbit pAb

Catalog No.: A18402

Basic Information

Observed MW

142kDa

Calculated MW

142kDa

Category

Primary antibody

Applications

ELISA, WB, IP

Cross-Reactivity

Human, Mouse

Background

This gene belongs to the SMC3 subfamily of SMC proteins. The encoded protein occurs in certain cell types as either an intracellular, nuclear protein or a secreted protein. The nuclear form, known as structural maintenance of chromosomes 3, is a component of the multimeric cohesin complex that holds together sister chromatids during mitosis, enabling proper chromosome segregation. Post-translational modification of the encoded protein by the addition of chondroitin sulfate chains gives rise to the secreted proteoglycan bamacan, an abundant basement membrane protein.

Recommended Dilutions

WB 1:500 - 1:2000

IP 0.5µg-4µg antibody for
400µg-600µg extracts of
whole cells

Immunogen Information

Gene ID

9126

Swiss Prot

Q9UQE7

Immunogen

Recombinant fusion protein containing a sequence corresponding to amino acids 909-1199 of human SMC3 (NP_005436.1).

Synonyms

BAM; BMH; HCAP; CDLS3; CSPG6; SMC3L1; SMC3

Contact

☎ | 400-999-6126

✉ | cn.market@abclonal.com.cn

🌐 | www.abclonal.com.cn

Product Information

Source

Rabbit

Isotype

IgG

Purification

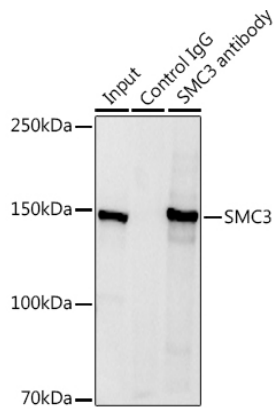
Affinity purification

Storage

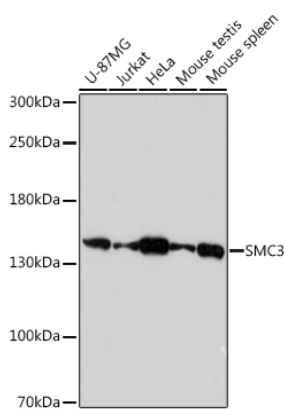
Store at -20°C. Avoid freeze / thaw cycles.

Buffer: PBS with 0.01% thimerosal, 50% glycerol, pH7.3.

Validation Data



Immunoprecipitation analysis of 600 μ g extracts of Mouse spleen using 3 μ g SMC3 antibody (A18402). Western blot was performed from the immunoprecipitate using SMC3 antibody (A18402) at a dilution of 1:1000.



Western blot analysis of various lysates using SMC3 Rabbit pAb (A18402) at 1:1000 dilution. Secondary antibody: HRP Goat Anti-Rabbit IgG (H+L) (AS014) at 1:10000 dilution. Lysates/proteins: 25 μ g per lane. Blocking buffer: 3% nonfat dry milk in TBST. Detection: ECL Basic Kit (RM00020). Exposure time: 90s.