

PRAF2 Rabbit pAb

Catalog No.: A18421

Basic Information

Observed MW

19kDa

Calculated MW

19kDa

Category

Primary antibody

Applications

ELISA, WB

Cross-Reactivity

Human, Mouse, Rat

Background

Predicted to be involved in L-glutamate transmembrane transport. Predicted to be located in endosome membrane. Predicted to be integral component of membrane. Predicted to be active in membrane.

Recommended Dilutions

WB 1:500 - 1:2000

Immunogen Information

Gene ID

11230

Swiss Prot

O60831

Immunogen

A synthetic peptide corresponding to a sequence within amino acids 1-50 of human PRAF2 (NP_009144.1).

Synonyms

JM4; Yip6a; PRAF2

Contact

☎ | 400-999-6126

✉ | cn.market@abclonal.com.cn

🌐 | www.abclonal.com.cn

Product Information

Source

Rabbit

Isotype

IgG

Purification

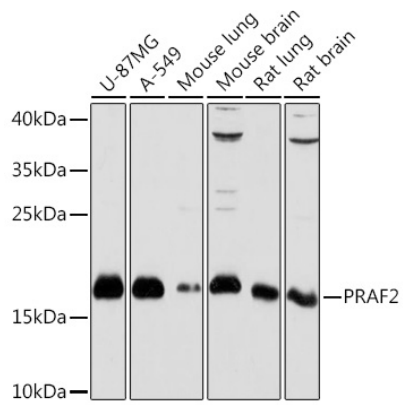
Affinity purification

Storage

Store at -20°C. Avoid freeze / thaw cycles.

Buffer: PBS with 0.01% thimerosal, 50% glycerol, pH7.3.

Validation Data



Western blot analysis of various lysates using PRAF2 Rabbit pAb (A18421) at 1:1000 dilution.
Secondary antibody: HRP Goat Anti-Rabbit IgG (H+L) (AS014) at 1:10000 dilution.
Lysates/proteins: 25µg per lane.
Blocking buffer: 3% nonfat dry milk in TBST.
Detection: ECL Basic Kit (RM00020).
Exposure time: 30s.