

TMEM2 Rabbit pAb

Catalog No.: A18439

Basic Information

Observed MW

200kDa

Calculated MW

154kDa

Category

Primary antibody

Applications

ELISA, WB

Cross-Reactivity

Mouse, Rat

Background

This gene encodes a type II transmembrane protein that belongs to the interferon-induced transmembrane (IFITM) protein superfamily. The encoded protein functions as a cell surface hyaluronidase that cleaves extracellular high molecular weight hyaluronan into intermediate size fragments before internalization and degradation in the lysosome. It also has an interferon-mediated antiviral function in humans through activation of the JAK STAT signaling pathway. The activation of this gene by transcription factor SOX4 in breast cancer cells has been shown to mediate the pathological effects of SOX4 on cancer progression. Naturally occurring mutations in this gene are associated with autosomal recessive non-syndromic hearing loss.

Recommended Dilutions

WB 1:500 - 1:2000

Immunogen Information

Gene ID

23670

Swiss Prot

Q9UHN6

Immunogen

A synthetic peptide corresponding to a sequence within amino acids 1150-1250 of human TMEM2 (NP_037522.1).

Synonyms

TMEM2

Contact

 | 400-999-6126

 | cn.market@abclonal.com.cn

 | www.abclonal.com.cn

Product Information

Source

Rabbit

Isotype

IgG

Purification

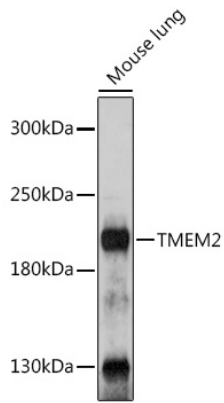
Affinity purification

Storage

Store at -20°C. Avoid freeze / thaw cycles.

Buffer: PBS with 0.01% thimerosal, 50% glycerol, pH7.3.

Validation Data



Western blot analysis of lysates from Mouse lung, using TMEM2 Rabbit pAb (A18439) at 1:1000 dilution.
Secondary antibody: HRP Goat Anti-Rabbit IgG (H+L) (AS014) at 1:10000 dilution.
Lysates/proteins: 25 μ g per lane.
Blocking buffer: 3% nonfat dry milk in TBST.
Detection: ECL Enhanced Kit (RM00021).
Exposure time: 3min.