

SIPA1L1 Rabbit pAb

Catalog No.: A18445

Basic Information

Observed MW

180kDa

Calculated MW

200kDa

Category

Primary antibody

Applications

ELISA, WB

Cross-Reactivity

Mouse

Background

Predicted to enable GTPase activator activity; actin filament binding activity; and protein kinase binding activity. Predicted to be involved in several processes, including actin cytoskeleton organization; activation of GTPase activity; and regulation of postsynapse organization. Located in actin cytoskeleton and plasma membrane.

Recommended Dilutions

WB 1:500 - 1:1000

Immunogen Information

Gene ID

26037

Swiss Prot

O43166

Immunogen

Recombinant fusion protein containing a sequence corresponding to amino acids 1480-1700 of human SIPA1L1 (NP_056371.1).

Synonyms

E6TP1; SPAR1; SIPA1L1

Contact

 | 400-999-6126

 | cn.market@abclonal.com.cn

 | www.abclonal.com.cn

Product Information

Source

Rabbit

Isotype

IgG

Purification

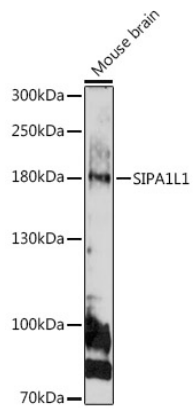
Affinity purification

Storage

Store at -20°C. Avoid freeze / thaw cycles.

Buffer: PBS with 0.01% thimerosal, 50% glycerol, pH7.3.

Validation Data



Western blot analysis of lysates from Mouse brain, using SIPA1L1 Rabbit pAb (A18445) at 1:1000 dilution.
Secondary antibody: HRP Goat Anti-Rabbit IgG (H+L) (AS014) at 1:10000 dilution.
Lysates/proteins: 25µg per lane.
Blocking buffer: 3% nonfat dry milk in TBST.
Detection: ECL Basic Kit (RM00020).
Exposure time: 180s.