

# SIRT6 Rabbit pAb

Catalog No.: A18468

## Basic Information

### Observed MW

39kDa

### Calculated MW

39kDa

### Category

Primary antibody

### Applications

ELISA, WB, IHC-P

### Cross-Reactivity

Human, Mouse, Rat

## Background

This gene encodes a member of the sirtuin family of NAD-dependent enzymes that are implicated in cellular stress resistance, genomic stability, aging and energy homeostasis. The encoded protein is localized to the nucleus, exhibits ADP-ribosyl transferase and histone deacetylase activities, and plays a role in DNA repair, maintenance of telomeric chromatin, inflammation, lipid and glucose metabolism. Alternative splicing results in multiple transcript variants encoding different isoforms.

## Recommended Dilutions

WB 1:500 - 1:2000

IHC-P 1:50 - 1:200

## Immunogen Information

### Gene ID

51548

### Swiss Prot

Q8N6T7

### Immunogen

Recombinant fusion protein containing a sequence corresponding to amino acids 1-355 of human SIRT6 (NP\_057623.2).

### Synonyms

SIR2L6; hSIRT6; SIRT6

## Contact

☎ | 400-999-6126

✉ | [cn.market@abclonal.com.cn](mailto:cn.market@abclonal.com.cn)

🌐 | [www.abclonal.com.cn](http://www.abclonal.com.cn)

## Product Information

### Source

Rabbit

### Isotype

IgG

### Purification

Affinity purification

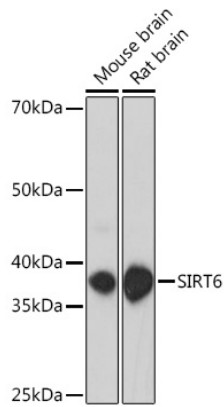
### Storage

Store at -20°C. Avoid freeze / thaw cycles.

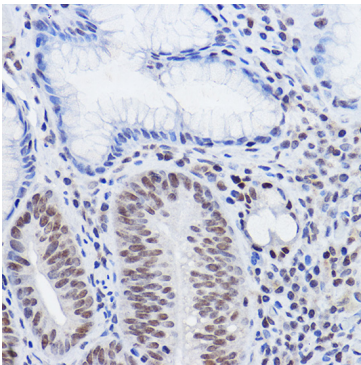
Buffer: PBS with 0.05% proclin300, 50% glycerol, pH7.3.

## Validation Data

---



Western blot analysis of various lysates using SIRT6 Rabbit pAb (A18468) at 1:1000 dilution.  
Secondary antibody: HRP Goat Anti-Rabbit IgG (H+L) (AS014) at 1:10000 dilution.  
Lysates/proteins: 25µg per lane.  
Blocking buffer: 3% nonfat dry milk in TBST.  
Detection: ECL Basic Kit (RM00020).  
Exposure time: 30s.



Immunohistochemistry analysis of paraffin-embedded human colon carcinoma using SIRT6 Rabbit pAb (A18468) at dilution of 1:50 (40x lens). Perform high pressure antigen retrieval with 10 mM citrate buffer pH 6.0 before commencing with IHC staining protocol.