

CDV3 Rabbit pAb

Catalog No.: A18472

Basic Information

Observed MW

27kDa

Calculated MW

27kDa

Category

Primary antibody

Applications

ELISA, WB, IF/ICC

Cross-Reactivity

Mouse, Rat

Background

Located in cytosol and plasma membrane.

Recommended Dilutions

WB 1:500 - 1:2000

IF/ICC 1:50 - 1:200

Immunogen Information

Gene ID

55573

Swiss Prot

Q9UKY7

Immunogen

A synthetic peptide corresponding to a sequence within amino acids 150-250 of human CDV3 (NP_060018.1).

Synonyms

H41; CDV3

Contact

 | 400-999-6126

 | cn.market@abclonal.com.cn

 | www.abclonal.com.cn

Product Information

Source

Rabbit

Isotype

IgG

Purification

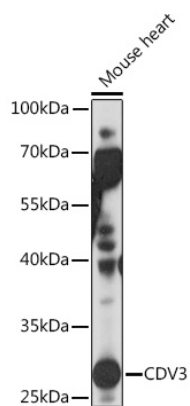
Affinity purification

Storage

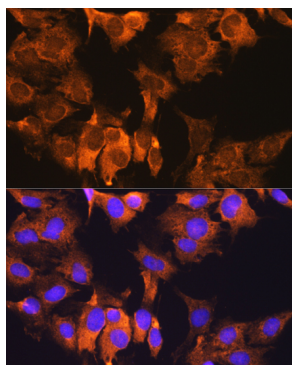
Store at -20°C. Avoid freeze / thaw cycles.

Buffer: PBS with 0.01% thimerosal, 50% glycerol, pH7.3.

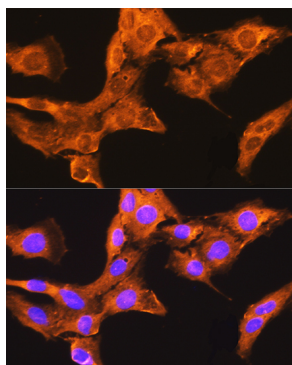
Validation Data



Western blot analysis of lysates from Mouse heart, using CDV3 Rabbit pAb (A18472) at 1:1000 dilution.
Secondary antibody: HRP Goat Anti-Rabbit IgG (H+L) (AS014) at 1:10000 dilution.
Lysates/proteins: 25µg per lane.
Blocking buffer: 3% nonfat dry milk in TBST.
Detection: ECL Basic Kit (RM00020).
Exposure time: 10s.



Immunofluorescence analysis of C6 cells using CDV3 Rabbit pAb (A18472) at dilution of 1:100. Secondary antibody: Cy3 Goat Anti-Rabbit IgG (H+L) (AS007) at 1:500 dilution. Blue: DAPI for nuclear staining.



Immunofluorescence analysis of L929 cells using CDV3 Rabbit pAb (A18472) at dilution of 1:100. Secondary antibody: Cy3 Goat Anti-Rabbit IgG (H+L) (AS007) at 1:500 dilution. Blue: DAPI for nuclear staining.