

# SERINC1 Rabbit pAb

Catalog No.: A18478

## Basic Information

### Observed MW

50kDa

### Calculated MW

50kDa

### Category

Primary antibody

### Applications

ELISA, WB, IHC-P

### Cross-Reactivity

Human, Mouse, Rat

## Background

Predicted to enable protein-macromolecule adaptor activity. Predicted to be involved in several processes, including phosphatidylserine metabolic process; positive regulation of CDP-diacylglycerol-serine O-phosphatidyltransferase activity; and positive regulation of serine C-palmitoyltransferase activity. Predicted to be located in endoplasmic reticulum membrane and plasma membrane. Predicted to be active in membrane.

## Recommended Dilutions

WB	1:500 - 1:2000
IHC-P	1:50 - 1:200

## Immunogen Information

### Gene ID

57515

### Swiss Prot

Q9NRX5

### Immunogen

A synthetic peptide corresponding to a sequence within amino acids 350-453 of human SERINC1 (NP\_065806.1).

### Synonyms

TDE2; TMS2; TDE1L; TMS-2; SERINC1

## Contact

 | 400-999-6126

 | [cn.market@abclonal.com.cn](mailto:cn.market@abclonal.com.cn)

 | [www.abclonal.com.cn](http://www.abclonal.com.cn)

## Product Information

### Source

Rabbit

### Isotype

IgG

### Purification

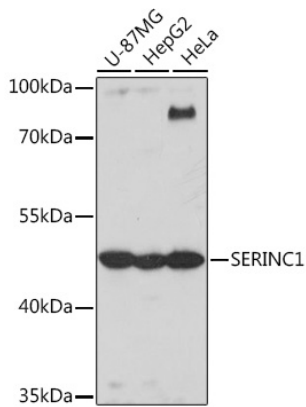
Affinity purification

### Storage

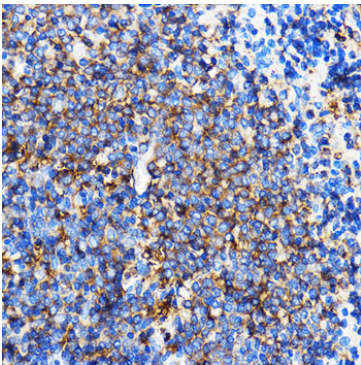
Store at -20°C. Avoid freeze / thaw cycles.

Buffer: PBS with 0.01% thimerosal, 50% glycerol, pH7.3.

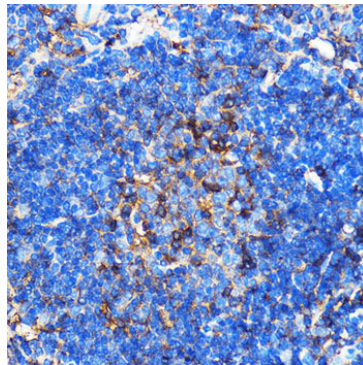
## Validation Data



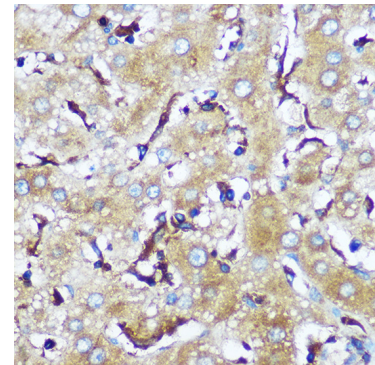
Western blot analysis of various lysates using SERINC1 Rabbit pAb (A18478) at 1:1000 dilution. Secondary antibody: HRP Goat Anti-Rabbit IgG (H+L) (AS014) at 1:10000 dilution. Lysates/proteins: 25µg per lane. Blocking buffer: 3% nonfat dry milk in TBST. Detection: ECL Basic Kit (RM00020). Exposure time: 10s.



Immunohistochemistry analysis of paraffin-embedded Rat spleen using SERINC1 Rabbit pAb (A18478) at dilution of 1:100 (40x lens). Perform microwave antigen retrieval with 10 mM PBS buffer pH 7.2 before commencing with IHC staining protocol.



Immunohistochemistry analysis of paraffin-embedded Mouse spleen using SERINC1 Rabbit pAb (A18478) at dilution of 1:100 (40x lens). Perform microwave antigen retrieval with 10 mM PBS buffer pH 7.2 before commencing with IHC staining protocol.



Immunohistochemistry analysis of paraffin-embedded Human liver using SERINC1 Rabbit pAb (A18478) at dilution of 1:100 (40x lens). Perform microwave antigen retrieval with 10 mM PBS buffer pH 7.2 before commencing with IHC staining protocol.