

# SLTM Rabbit pAb

Catalog No.: A18493

## Basic Information

### Observed MW

117kDa

### Calculated MW

117kDa

### Category

Primary antibody

### Applications

ELISA, WB

### Cross-Reactivity

Mouse

## Background

Enables RNA binding activity. Predicted to be involved in regulation of mRNA processing and regulation of transcription by RNA polymerase II. Located in nuclear body.

## Recommended Dilutions

WB 1:500 - 1:2000

## Immunogen Information

### Gene ID

79811

### Swiss Prot

Q9NWH9

### Immunogen

A synthetic peptide corresponding to a sequence within amino acids 900-1000 of human SLTM (NP\_079031.2).

### Synonyms

Met; SLTM

## Contact

 | 400-999-6126

 | [cn.market@abclonal.com.cn](mailto:cn.market@abclonal.com.cn)

 | [www.abclonal.com.cn](http://www.abclonal.com.cn)

## Product Information

### Source

Rabbit

### Isotype

IgG

### Purification

Affinity purification

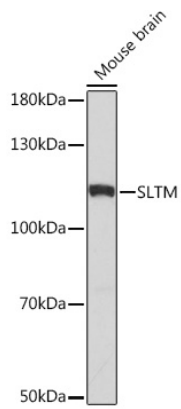
### Storage

Store at -20°C. Avoid freeze / thaw cycles.

Buffer: PBS with 0.01% thimerosal, 50% glycerol, pH7.3.

## Validation Data

---



Western blot analysis of lysates from Mouse brain, using SLTM Rabbit pAb (A18493) at 1:1000 dilution.  
Secondary antibody: HRP Goat Anti-Rabbit IgG (H+L) (AS014) at 1:10000 dilution.  
Lysates/proteins: 25µg per lane.  
Blocking buffer: 3% nonfat dry milk in TBST.  
Detection: ECL Basic Kit (RM00020).  
Exposure time: 30s.