

# DTX3L Rabbit pAb

Catalog No.: A18551

## Basic Information

### Observed MW

84kDa

### Calculated MW

84kDa

### Category

Primary antibody

### Applications

ELISA, WB, IF/ICC

### Cross-Reactivity

Human, Mouse, Rat

## Background

Enables several functions, including STAT family protein binding activity; ubiquitin-like protein ligase binding activity; and ubiquitin-protein transferase activity. Involved in several processes, including positive regulation of macromolecule metabolic process; positive regulation of protein localization; and protein ubiquitination. Located in cytosol; lysosome; and nucleoplasm. Part of protein-containing complex. Colocalizes with early endosome and nucleus.

## Recommended Dilutions

WB 1:500 - 1:2000

IF/ICC 1:50 - 1:200

## Immunogen Information

### Gene ID

151636

### Swiss Prot

Q8TDB6

### Immunogen

Recombinant fusion protein containing a sequence corresponding to amino acids 601-740 of human DTX3L (NP\_612144.1).

### Synonyms

BBAP; RNF143; DTX3L

## Contact

☎ | 400-999-6126

✉ | [cn.market@abclonal.com.cn](mailto:cn.market@abclonal.com.cn)

🌐 | [www.abclonal.com.cn](http://www.abclonal.com.cn)

## Product Information

### Source

Rabbit

### Isotype

IgG

### Purification

Affinity purification

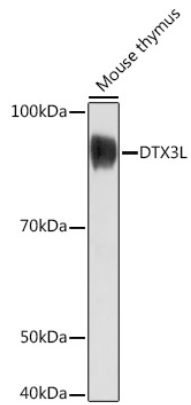
### Storage

Store at -20°C. Avoid freeze / thaw cycles.

Buffer: PBS with 0.01% thimerosal, 50% glycerol, pH7.3.

## Validation Data

---



Western blot analysis of lysates from Mouse thymus, using DTX3L Rabbit pAb (A18551) at 1:1000 dilution.  
Secondary antibody: HRP Goat Anti-Rabbit IgG (H+L) (AS014) at 1:10000 dilution.  
Lysates/proteins: 25µg per lane.  
Blocking buffer: 3% nonfat dry milk in TBST.  
Detection: ECL Basic Kit (RM00020).  
Exposure time: 180s.