

# WBP2NL Rabbit pAb

Catalog No.: A18555

## Basic Information

### Observed MW

32kDa

### Calculated MW

32kDa

### Category

Primary antibody

### Applications

WB,IF/ICC,ELISA

### Cross-Reactivity

Mouse, Rat

## Background

WBP2NL is a sperm-specific WW domain-binding protein that promotes meiotic resumption and pronuclear development during oocyte fertilization (Wu et al., 2007 [PubMed 17289678]).

## Recommended Dilutions

**WB** 1:500 - 1:2000

**IF/ICC** 1:50 - 1:200

**ELISA** Recommended starting concentration is 1 µg/mL. Please optimize the concentration based on your specific assay requirements.

## Immunogen Information

### Gene ID

164684

### Swiss Prot

Q6ICG8

### Immunogen

Recombinant protein (or fragment). This information is considered to be commercially sensitive.

### Synonyms

PAWP; GRAMD7; WBP2NL

## Contact

☎ | 400-999-6126

✉ | [cn.market@abclonal.com.cn](mailto:cn.market@abclonal.com.cn)

🌐 | [www.abclonal.com.cn](http://www.abclonal.com.cn)

## Product Information

### Source

Rabbit

### Isotype

IgG

### Purification

Affinity purification

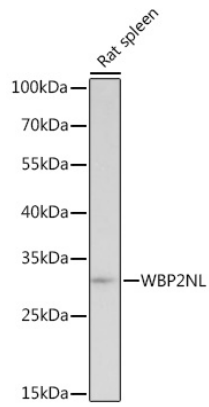
### Storage

Store at -20°C. Avoid freeze / thaw cycles.

Buffer: PBS with 0.01% thimerosal, 50% glycerol, pH7.3.

## Validation Data

---



Western blot analysis of lysates from Rat spleen, using WBP2NL Rabbit pAb (A18555) at 1:1000 dilution.  
Secondary antibody: HRP-conjugated Goat anti-Rabbit IgG (H+L) (AS014) at 1:10000 dilution.  
Lysates/proteins: 25µg per lane.  
Blocking buffer: 3% nonfat dry milk in TBST.  
Detection: ECL Basic Kit (RM00020).  
Exposure time: 30s.