

LEMD2 Rabbit pAb

Catalog No.: A18558 **1 Publications**

Basic Information

Observed MW

57kDa

Calculated MW

57kDa

Category

Primary antibody

Applications

ELISA, WB

Cross-Reactivity

Mouse

Background

This gene encodes a LEM domain-containing transmembrane protein of the inner nuclear membrane. The protein is involved in nuclear structure organization and plays a role in cell signaling and differentiation. Mutations in this gene result in Cataract 46, juvenile-onset. Multiple transcript variants have been found for this gene.

Recommended Dilutions

WB 1:500 - 1:2000

Immunogen Information

Gene ID

221496

Swiss Prot

Q8NC56

Immunogen

A synthetic peptide corresponding to a sequence within amino acids 200-300 of human LEMD2 (NP_851853.1).

Synonyms

LEM2; NET25; MARUPS; CTRCT42; dJ482C21.1; LEMD2

Contact

 | 400-999-6126

 | cn.market@abclonal.com.cn

 | www.abclonal.com.cn

Product Information

Source

Rabbit

Isotype

IgG

Purification

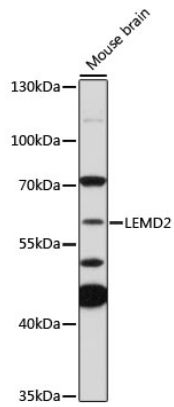
Affinity purification

Storage

Store at -20°C. Avoid freeze / thaw cycles.

Buffer: PBS with 0.01% thimerosal, 50% glycerol, pH7.3.

Validation Data



Western blot analysis of lysates from mouse brain, using LEMD2 Rabbit pAb (A18558) at 1:1000 dilution.
Secondary antibody: HRP Goat Anti-Rabbit IgG (H+L) (AS014) at 1:10000 dilution.
Lysates/proteins: 25µg per lane.
Blocking buffer: 3% nonfat dry milk in TBST.
Detection: ECL Basic Kit (RM00020).
Exposure time: 3min.