

[KD Validated] CTCF Rabbit pAb

Catalog No.: A18627

Basic Information

Observed MW

140kDa

Calculated MW

83kDa

Category

Primary antibody

Applications

WB,IHC-P,IP,ELISA,ChIP

Cross-Reactivity

Human, Mouse, Rat

Background

This gene is a member of the BORIS + CTCF gene family and encodes a transcriptional regulator protein with 11 highly conserved zinc finger (ZF) domains. This nuclear protein is able to use different combinations of the ZF domains to bind different DNA target sequences and proteins. Depending upon the context of the site, the protein can bind a histone acetyltransferase (HAT)-containing complex and function as a transcriptional activator or bind a histone deacetylase (HDAC)-containing complex and function as a transcriptional repressor. If the protein is bound to a transcriptional insulator element, it can block communication between enhancers and upstream promoters, thereby regulating imprinted expression. Mutations in this gene have been associated with invasive breast cancers, prostate cancers, and Wilms' tumors. Alternatively spliced transcript variants encoding different isoforms have been found for this gene.

Recommended Dilutions

WB 1:500 - 1:2000

IHC-P 1:50 - 1:200

IP 0.5µg-4µg antibody for
200µg-400µg extracts of
whole cells

ELISA Recommended starting
concentration is 1 µg/mL.
Please optimize the
concentration based on
your specific assay
requirements.

ChIP 5µg antibody for
10µg-15µg of Chromatin

Contact

☎ | 400-999-6126

✉ | cn.market@abclonal.com.cn

Immunogen Information

Gene ID

10664

Swiss Prot

P49711

Immunogen

Recombinant fusion protein containing a sequence corresponding to amino acids 1-260 of human CTCF (NP_006556.1).

Synonyms

MRD21; FAP108; CFAP108; CF

Product Information

Source

Rabbit

Isotype

IgG

Purification

Affinity purification

Storage

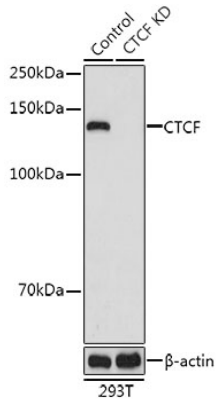
Store at -20°C. Avoid freeze / thaw cycles.

Buffer: PBS with 0.01% thimerosal, 50% glycerol, pH7.3.

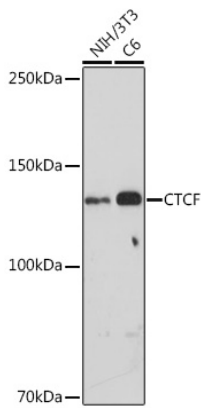


| www.abclonal.com.cn

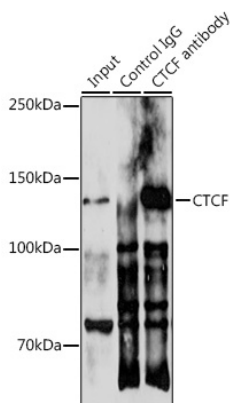
Validation Data



Western blot analysis of lysates from wild type (WT) and CTCF knockdown (KD) 293T cells, using [KD Validated] CTCF Rabbit pAb (A18627) at 1:1000 dilution.
Secondary antibody: HRP-conjugated Goat anti-Rabbit IgG (H+L) (AS014) at 1:10000 dilution.
Lysates/proteins: 25 μ g per lane.
Blocking buffer: 3% nonfat dry milk in TBST.
Detection: ECL Basic Kit (RM00020).
Exposure time: 10s.

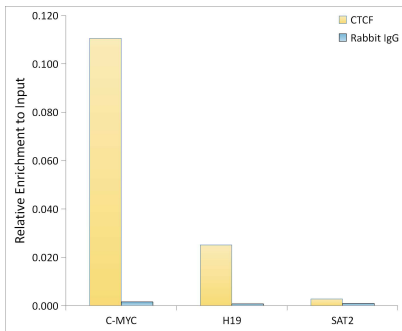


Western blot analysis of various lysates using [KD Validated] CTCF Rabbit pAb (A18627) at 1:500 dilution.
Secondary antibody: HRP-conjugated Goat anti-Rabbit IgG (H+L) (AS014) at 1:10000 dilution.
Lysates/proteins: 25 μ g per lane.
Blocking buffer: 3% nonfat dry milk in TBST.
Detection: ECL Basic Kit (RM00020).
Exposure time: 30s.

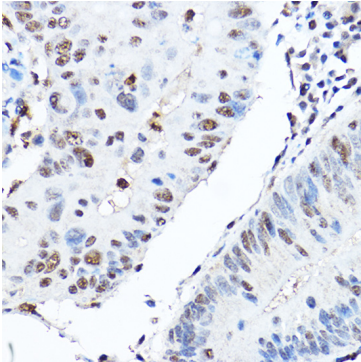


Immunoprecipitation analysis of 300 μ g extracts of 293T cells using 3 μ g [KD Validated] CTCF Rabbit pAb (A18627). Western blot was performed from the immunoprecipitate using CTCF antibody (A18627) at a dilution of 1:500.

Validation Data



Chromatin immunoprecipitation analysis of extracts of HeLa cells, using [KD Validated] CTCF Rabbit pAb (A18627) and rabbit IgG. The amount of immunoprecipitated DNA was checked by quantitative PCR. Histogram was constructed by the ratios of the immunoprecipitated DNA to the input.



Immunohistochemistry analysis of paraffin-embedded Human colon carcinoma using [KD Validated] CTCF Rabbit pAb (A18627) at dilution of 1:200 (40x lens). High pressure antigen retrieval performed with 0.01M Citrate Bufferr (pH 6.0) prior to IHC staining.