

OsEIL1 Rabbit pAb

Catalog No.: A18629

Basic Information

Observed MW

90kDa

Calculated MW

71kDa

Category

Primary antibody

Applications

WB, ELISA

Cross-Reactivity

Oryza sativa

Background

Transcription factor acting as a positive regulator in the ethylene response pathway). Required for the inhibition of root growth by ethylene in etiolated seedlings. Functions upstream of the auxin biosynthetic gene YUCCA8 and directly activates its expression. Functions downstream of the ethylene signaling factor EIN2 in disease resistance against the rice blast fungus (*Magnaporthe oryzae*). Binds directly to the promoters of the NADPH oxidases RBOHA and RBOHB, and the jasmonate biosynthetic gene OPR4 to activate their expression during fungal infection. May enhance disease resistance by facilitating reactive oxygen species (ROS) generation and jasmonate biosynthesis with subsequent phytoalexin accumulation during *Magnaporthe oryzae* infection. Acts as negative regulator of salt tolerance. During salt stress, activates the cation transporter HKT1, which mediates increased sodium uptake in roots, and contributes to sodium accumulation and salt toxicity. Binds directly to the DNA sequence 5'-TGTTACAAATACC-3' in the promoter of the GA20OX2 gene to activate its expression at the transcriptional level during ethylene signaling. Possesses transactivation activity in protoplasts.

Recommended Dilutions

WB 1:500 - 1:2000**ELISA** Recommended starting concentration is 1 µg/mL. Please optimize the concentration based on your specific assay requirements.

Immunogen Information

Gene ID

107276358

Swiss Prot

Q10M41

Immunogen

Recombinant protein (or fragment). This information is considered to be commercially sensitive.

Synonyms

EIL1; MHZ6; EIL1A; OsEIL1; OsEIL1a; OsJ_10672

Contact

 | 400-999-6126 | cn.market@abclonal.com.cn | www.abclonal.com.cn

Product Information

Source

Rabbit

Isotype

IgG

Purification

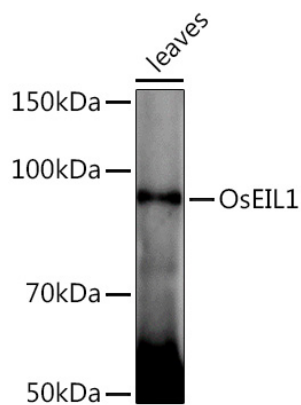
Affinity purification

Storage

Store at -20°C. Avoid freeze / thaw cycles.

Buffer: PBS with 0.01% thimerosal, 50% glycerol, pH7.3.

Validation Data



Western blot analysis of extracts of various tissues from the japonica rice (*Oryza sativa* L.) variety Zhonghua 11, using OsEIL1 Rabbit pAb (A18629) at 1:1000 dilution.

Secondary antibody: HRP-conjugated Goat anti-Rabbit IgG (H+L) (AS014) at 1:10000 dilution.

Lysates/proteins: 25µg per lane.

Blocking buffer: 3% nonfat dry milk in TBST.

Detection: ECL Enhanced Kit (RM00021).

Exposure time: 60s.