

DGCR8 Rabbit pAb

Catalog No.: A18630

Basic Information

Observed MW

110kDa

Calculated MW

86kDa

Category

Primary antibody

Applications

ELISA, WB, IHC-P, IP

Cross-Reactivity

Human, Mouse, Rat

Background

This gene encodes a subunit of the microprocessor complex which mediates the biogenesis of microRNAs from the primary microRNA transcript. The encoded protein is a double-stranded RNA binding protein that functions as the non-catalytic subunit of the microprocessor complex. This protein is required for binding the double-stranded RNA substrate and facilitates cleavage of the RNA by the ribonuclease III protein, Drosha. Alternate splicing results in multiple transcript variants.

Recommended Dilutions

WB 1:500 - 1:2000

IHC-P 1:50 - 1:200

IP 0.5µg-4µg antibody for
200µg-400µg extracts of
whole cells

Immunogen Information

Gene ID

54487

Swiss Prot

Q8WYQ5

Immunogen

Recombinant fusion protein containing a sequence corresponding to amino acids 180-340 of human DGCR8 (NP_073557.3).

Synonyms

Gy1; pasha; DGCRK6; C22orf12; DGCR8

Contact

☎ | 400-999-6126

✉ | cn.market@abclonal.com.cn

🌐 | www.abclonal.com.cn

Product Information

Source

Rabbit

Isotype

IgG

Purification

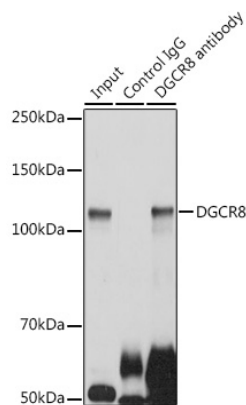
Affinity purification

Storage

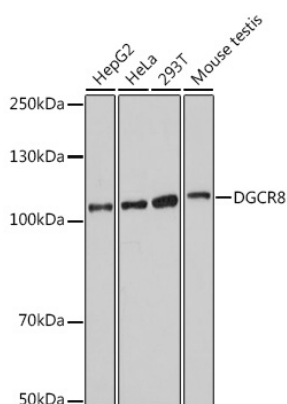
Store at -20°C. Avoid freeze / thaw cycles.

Buffer: PBS with 0.01% thimerosal, 50% glycerol, pH7.3.

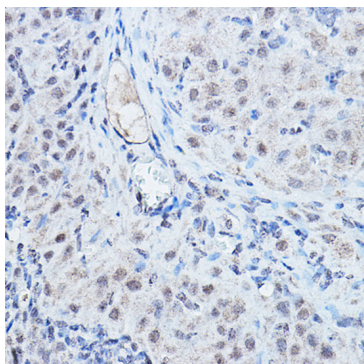
Validation Data



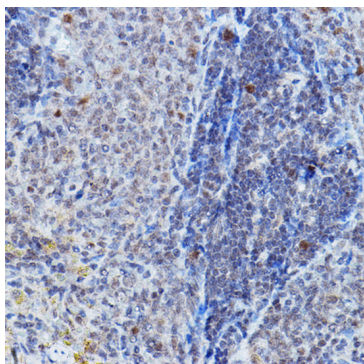
Immunoprecipitation analysis of 300 µg extracts of HeLa cells using 3 µg DGCR8 antibody (A18630). Western blot was performed from the immunoprecipitate using DGCR8 antibody (A18630) at a dilution of 1:1000.



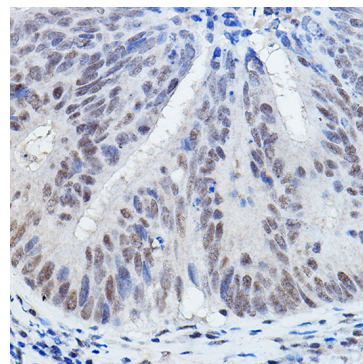
Western blot analysis of various lysates using DGCR8 Rabbit pAb (A18630) at 1:1000 dilution. Secondary antibody: HRP Goat Anti-Rabbit IgG (H+L) (AS014) at 1:10000 dilution. Lysates/proteins: 25µg per lane. Blocking buffer: 3% nonfat dry milk in TBST. Detection: ECL Basic Kit (RM00020). Exposure time: 90s.



Immunohistochemistry analysis of paraffin-embedded rat ovary using DGCR8 Rabbit pAb (A18630) at dilution of 1:200 (40x lens). Perform high pressure antigen retrieval with 10 mM citrate buffer pH 6.0 before commencing with IHC staining protocol.

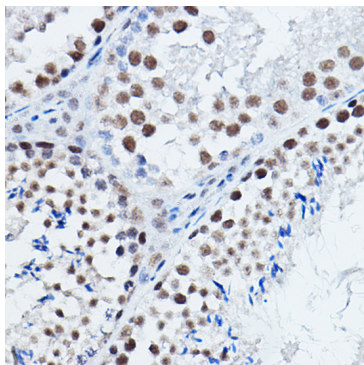


Immunohistochemistry analysis of paraffin-embedded rat spleen using DGCR8 Rabbit pAb (A18630) at dilution of 1:200 (40x lens). Perform high pressure antigen retrieval with 10 mM citrate buffer pH 6.0 before commencing with IHC staining protocol.



Immunohistochemistry analysis of paraffin-embedded human colon carcinoma using DGCR8 Rabbit pAb (A18630) at dilution of 1:200 (40x lens). Perform high pressure antigen retrieval with 10 mM citrate buffer pH 6.0 before commencing with IHC staining protocol.

Validation Data



Immunohistochemistry analysis of paraffin-embedded mouse testis using DGCR8 Rabbit pAb (A18630) at dilution of 1:200 (40x lens). Perform high pressure antigen retrieval with 10 mM citrate buffer pH 6.0 before commencing with IHC staining protocol.