

# APOBEC2 Rabbit pAb

Catalog No.: A18653

## Basic Information

### Observed MW

26kDa

### Calculated MW

26kDa

### Category

Primary antibody

### Applications

ELISA, WB

### Cross-Reactivity

Human, Mouse, Rat

## Background

Enables cytidine deaminase activity and identical protein binding activity. Involved in DNA demethylation. Acts upstream of or within cytidine to uridine editing. Predicted to be active in cytoplasm and nucleus.

## Recommended Dilutions

WB 1:500 - 1:2000

## Immunogen Information

### Gene ID

10930

### Swiss Prot

Q9Y235

### Immunogen

Recombinant fusion protein containing a sequence corresponding to amino acids 1-224 of human APOBEC2 (NP\_006780.1).

### Synonyms

ARP1; ARCD1; APOBEC2

## Contact

 | 400-999-6126

 | [cn.market@abclonal.com.cn](mailto:cn.market@abclonal.com.cn)

 | [www.abclonal.com.cn](http://www.abclonal.com.cn)

## Product Information

### Source

Rabbit

### Isotype

IgG

### Purification

Affinity purification

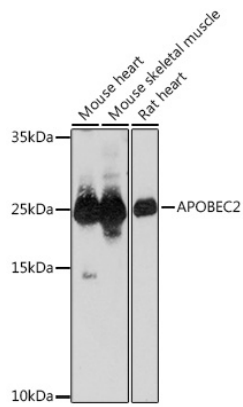
### Storage

Store at -20°C. Avoid freeze / thaw cycles.

Buffer: PBS with 0.01% thimerosal, 50% glycerol, pH7.3.

## Validation Data

---



Western blot analysis of various lysates using APOBEC2 Rabbit pAb (A18653) at 1:1000 dilution.  
Secondary antibody: HRP Goat Anti-Rabbit IgG (H+L) (AS014) at 1:10000 dilution.  
Lysates/proteins: 25µg per lane.  
Blocking buffer: 3% nonfat dry milk in TBST.  
Detection: ECL Basic Kit (RM00020).  
Exposure time: 30s.