

# H2-Ab1 Rabbit pAb

Catalog No.: A18658 **4 Publications**

## Basic Information

### Observed MW

30kDa

### Calculated MW

30kDa

### Category

Primary antibody

### Applications

WB,IHC-P,IF/ICC,ELISA

### Cross-Reactivity

Human, Mouse, Rat

## Background

Enables several functions, including peptide antigen binding activity; protein antigen binding activity; and toxic substance binding activity. Involved in several processes, including B cell affinity maturation; cellular response to interferon-gamma; and positive regulation of T-helper 1 type immune response. Acts upstream of or within antigen processing and presentation of exogenous peptide antigen via MHC class II and immune response. Located in Golgi apparatus; endosome; and external side of plasma membrane. Is integral component of membrane. Part of MHC class II protein complex. Is expressed in lung; metanephros; and thymus primordium. Orthologous to human HLA-DQB2 (major histocompatibility complex, class II, DQ beta 2).

## Recommended Dilutions

**WB** 1:500 - 1:1000

**IHC-P** 1:50 - 1:200

**IF/ICC** 1:50 - 1:200

**ELISA** Recommended starting concentration is 1 µg/mL. Please optimize the concentration based on your specific assay requirements.

## Immunogen Information

### Gene ID

14961

### Swiss Prot

P06345

### Immunogen

Recombinant fusion protein containing a sequence corresponding to amino acids 30-219 of mouse H2-Ab1 (NP\_996988.2).

### Synonyms

IAb; Ia2; Ia-2; Abeta; H-2Ab; H2-Ab; Rmcs1; I-Abeta; H2-Ab1

## Contact

☎ | 400-999-6126

✉ | [cn.market@abclonal.com.cn](mailto:cn.market@abclonal.com.cn)

🌐 | [www.abclonal.com.cn](http://www.abclonal.com.cn)

## Product Information

### Source

Rabbit

### Isotype

IgG

### Purification

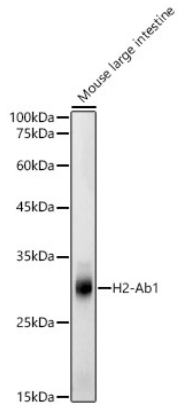
Affinity purification

### Storage

Store at -20°C. Avoid freeze / thaw cycles.

Buffer: PBS with 0.02% sodium azide,50% glycerol,pH7.3.

## Validation Data



Western blot analysis of lysates from Mouse large intestine, using H2-Ab1 Rabbit pAb (A18658) at 1:500 dilution.

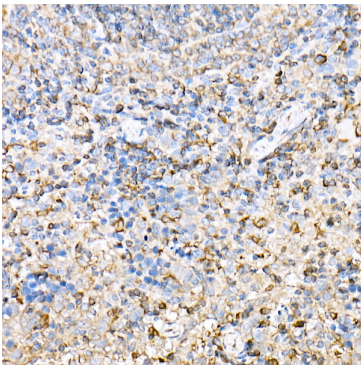
Secondary antibody: HRP-conjugated Goat anti-Rabbit IgG (H+L) (AS014) at 1:10000 dilution.

Lysates/proteins: 25µg per lane.

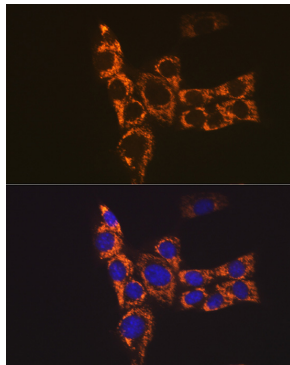
Blocking buffer: 3% nonfat dry milk in TBST.

Detection: ECL Basic Kit (RM00020).

Exposure time: 20s.



Immunohistochemistry analysis of paraffin-embedded Mouse spleen using H2-Ab1 Rabbit pAb (A18658) at dilution of 1:50 (40x lens). High pressure antigen retrieval performed with 0.01M Citrate Bufferr (pH 6.0) prior to IHC staining.



Immunofluorescence analysis of NIH-3T3 cells using H2-Ab1 Rabbit pAb (A18658) at dilution of 1:100 (40x lens). Secondary antibody: Cy3-conjugated Goat anti-Rabbit IgG (H+L) (AS007) at 1:500 dilution. Blue: DAPI for nuclear staining.