

WWC2 Rabbit pAb

Catalog No.: A18668

1 Publications

Basic Information

Observed MW

134kDa

Calculated MW

134kDa

Category

Primary antibody

Applications

WB,IHC-P,ELISA

Cross-Reactivity

Human, Mouse, Rat

Background

This gene encodes a member of the WW-and-C2-domain-containing family of proteins. Members of this family have two N-terminal WW domains that mediate binding to target proteins harboring L/PPxY motifs, an internal C2 domain for membrane association, and C-terminal alpha protein kinase C binding sites and class III PDZ domain-interaction motifs. Proteins of this family are able to form homo- and heterodimers and to modulate hippo pathway signaling.

Recommended Dilutions

WB 1:500 - 1:2000

IHC-P 1:50 - 1:200

ELISA Recommended starting concentration is 1 µg/mL. Please optimize the concentration based on your specific assay requirements.

Immunogen Information

Gene ID

80014

Swiss Prot

Q6AWC2

Immunogen

Recombinant protein (or fragment). This information is considered to be commercially sensitive.

Synonyms

BOMB; WWC2

Contact

☎ | 400-999-6126

✉ | cn.market@abclonal.com.cn

🌐 | www.abclonal.com.cn

Product Information

Source

Rabbit

Isotype

IgG

Purification

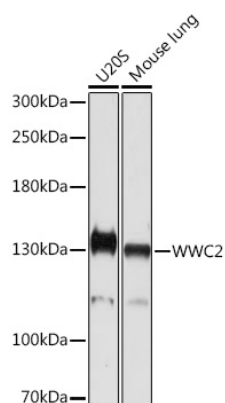
Affinity purification

Storage

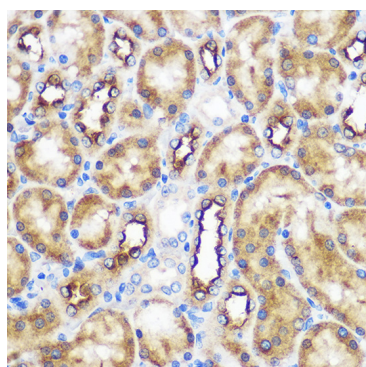
Store at -20°C. Avoid freeze / thaw cycles.

Buffer: PBS with 0.01% thimerosal, 50% glycerol, pH7.3.

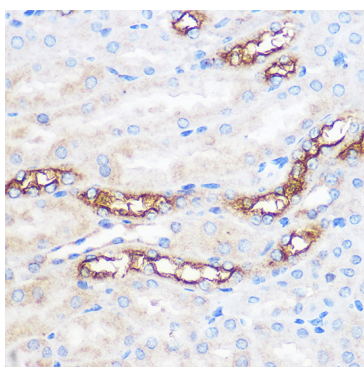
Validation Data



Western blot analysis of various lysates using WWC2 Rabbit pAb (A18668) at 1:1000 dilution.
Secondary antibody: HRP-conjugated Goat anti-Rabbit IgG (H+L) (AS014) at 1:10000 dilution.
Lysates/proteins: 25µg per lane.
Blocking buffer: 3% nonfat dry milk in TBST.
Detection: ECL Basic Kit (RM00020).
Exposure time: 5s.



Immunohistochemistry analysis of paraffin-embedded Rat kidney using WWC2 Rabbit pAb (A18668) at dilution of 1:100 (40x lens).
Microwave antigen retrieval performed with 0.01M PBS Buffer (pH 7.2) prior to IHC staining.



Immunohistochemistry analysis of paraffin-embedded Mouse kidney using WWC2 Rabbit pAb (A18668) at dilution of 1:100 (40x lens).
Microwave antigen retrieval performed with 0.01M PBS Buffer (pH 7.2) prior to IHC staining.