

# Pqbp1 Rabbit pAb

Catalog No.: A18680

## Basic Information

### Observed MW

35kDa

### Calculated MW

31kDa

### Category

Primary antibody

### Applications

ELISA, WB

### Cross-Reactivity

Human, Mouse, Rat

## Background

Predicted to enable double-stranded DNA binding activity; protein C-terminus binding activity; and ribonucleoprotein complex binding activity. Involved in alternative mRNA splicing, via spliceosome and neuron projection development. Acts upstream of or within regulation of dendrite morphogenesis. Located in cytoplasmic stress granule; neuronal ribonucleoprotein granule; and nuclear speck. Is expressed in several structures, including 1st branchial arch maxillary component; adrenal cortex; central nervous system; eye; and limb. Used to study Renpenning syndrome. Human ortholog(s) of this gene implicated in Renpenning syndrome. Orthologous to human PQBP1 (polyglutamine binding protein 1).

## Recommended Dilutions

WB 1:500 - 1:2000

## Immunogen Information

### Gene ID

54633

### Swiss Prot

Q91VJ5

### Immunogen

Recombinant fusion protein containing a sequence corresponding to amino acids 170-263 of mouse Pqbp1 (NP\_062351.2).

### Synonyms

Sfc2; npw38; PQBP-1; Pqbp1

## Contact

☎ | 400-999-6126

✉ | [cn.market@abclonal.com.cn](mailto:cn.market@abclonal.com.cn)

🌐 | [www.abclonal.com.cn](http://www.abclonal.com.cn)

## Product Information

### Source

Rabbit

### Isotype

IgG

### Purification

Affinity purification

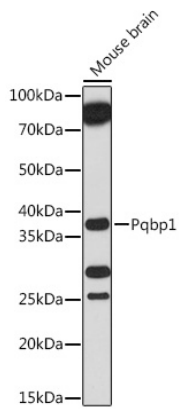
### Storage

Store at -20°C. Avoid freeze / thaw cycles.

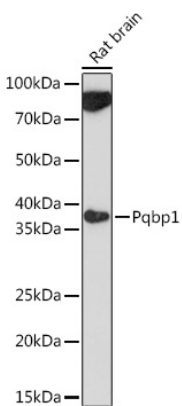
Buffer: PBS with 0.01% thimerosal, 50% glycerol, pH 7.3.

## Validation Data

---



Western blot analysis of lysates from Mouse brain, using Pqbp1 Rabbit pAb (A18680) at 1:1000 dilution.  
Secondary antibody: HRP Goat Anti-Rabbit IgG (H+L) (AS014) at 1:10000 dilution.  
Lysates/proteins: 25 $\mu$ g per lane.  
Blocking buffer: 3% nonfat dry milk in TBST.  
Detection: ECL Basic Kit (RM00020).  
Exposure time: 3min.



Western blot analysis of lysates from Rat brain, using Pqbp1 Rabbit pAb (A18680) at 1:1000 dilution.  
Secondary antibody: HRP Goat Anti-Rabbit IgG (H+L) (AS014) at 1:10000 dilution.  
Lysates/proteins: 25 $\mu$ g per lane.  
Blocking buffer: 3% nonfat dry milk in TBST.  
Detection: ECL Enhanced Kit (RM00021).  
Exposure time: 3min.