

ULK1/ULK2 Rabbit pAb

Catalog No.: A18685

Basic Information

Observed MW

113kDa

Calculated MW**Category**

Primary antibody

Applications

WB, ELISA

Cross-Reactivity

Human

Background

Mammalian ULK1 (unc-51 like kinase 1) and ULK2, *Caenorhabditis elegans* UNC-51, and *Drosophila melanogaster* Atg1 are serine/threonine kinases that regulate flux through the autophagy pathway in response to various types of cellular stress. ULK1 and ULK2 all have different tissue-specific expressions partially contributing to diverse and ULK-specific interaction networks in various tissues. ULK1 (or its close family member ULK2) interacts with several other proteins to form a large complex that is required for the formation of an autophagosome. The other proteins that complex with ULK1/ULK2 include ATG13, ATG101, and RB1CC1 (FIP200/ATG17). AMPK, activated during low nutrient conditions, directly phosphorylates ULK1 at multiple sites including Ser317, Ser555, and Ser777. Conversely, mTOR, which is a regulator of cell growth and is an inhibitor of autophagy, phosphorylates ULK1 at Ser757 and disrupts the interaction between ULK1 and AMPK.

Recommended Dilutions

WB 1:500 - 1:2000**ELISA** Recommended starting concentration is 1 µg/mL. Please optimize the concentration based on your specific assay requirements.

Immunogen Information

Gene ID

8408/9706

Swiss Prot

O75385/Q8IYT8

Immunogen

Recombinant protein (or fragment). This information is considered to be commercially sensitive.

Synonyms

Contact

 | 400-999-6126 | cn.market@abclonal.com.cn | www.abclonal.com.cn

Product Information

Source

Rabbit

Isotype

IgG

Purification

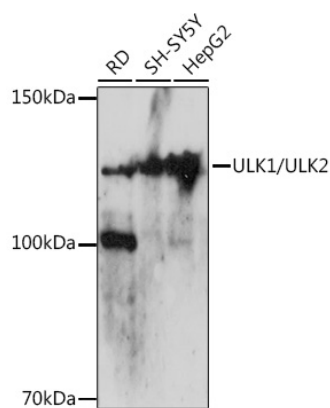
Affinity purification

Storage

Store at -20°C. Avoid freeze / thaw cycles.

Buffer: PBS with 0.01% thimerosal, 50% glycerol, pH 7.3.

Validation Data



Western blot analysis of various lysates using ULK1/ULK2 Rabbit pAb (A18685) at 1:500 dilution.
Secondary antibody: HRP-conjugated Goat anti-Rabbit IgG (H+L) (AS014) at 1:10000 dilution.
Lysates/proteins: 25µg per lane.
Blocking buffer: 3% nonfat dry milk in TBST.
Detection: ECL Basic Kit (RM00020).
Exposure time: 90s.