

# ATF4 Rabbit pAb

Catalog No.: A18687 **8 Publications**

## Basic Information

### Observed MW

50kDa

### Calculated MW

39kDa

### Category

Primary antibody

### Applications

ELISA, WB, IHC-P, IF/ICC

### Cross-Reactivity

Human, Mouse, Rat

## Background

This gene encodes a transcription factor that was originally identified as a widely expressed mammalian DNA binding protein that could bind a tax-responsive enhancer element in the LTR of HTLV-1. The encoded protein was also isolated and characterized as the cAMP-response element binding protein 2 (CREB-2). The protein encoded by this gene belongs to a family of DNA-binding proteins that includes the AP-1 family of transcription factors, cAMP-response element binding proteins (CREBs) and CREB-like proteins. These transcription factors share a leucine zipper region that is involved in protein-protein interactions, located C-terminal to a stretch of basic amino acids that functions as a DNA binding domain. Two alternative transcripts encoding the same protein have been described. Two pseudogenes are located on the X chromosome at q28 in a region containing a large inverted duplication.

## Recommended Dilutions

WB	1:500 - 1:1000
IHC-P	1:100 - 1:500
IF/ICC	1:50 - 1:200

## Immunogen Information

### Gene ID

468

### Swiss Prot

P18848

### Immunogen

Recombinant fusion protein containing a sequence corresponding to amino acids 260-351 of human ATF4 (NP\_001666.2).

### Synonyms

CREB2; TXREB; CREB-2; TAXREB67; ATF4

## Contact

☎ | 400-999-6126

✉ | [cn.market@abclonal.com.cn](mailto:cn.market@abclonal.com.cn)

🌐 | [www.abclonal.com.cn](http://www.abclonal.com.cn)

## Product Information

### Source

Rabbit

### Isotype

IgG

### Purification

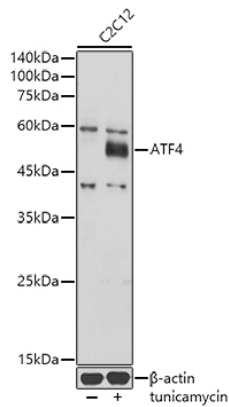
Affinity purification

### Storage

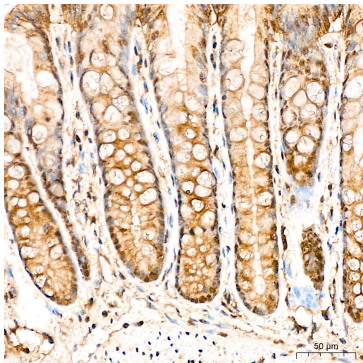
Store at -20°C. Avoid freeze / thaw cycles.

Buffer: PBS with 0.05% proclin300, 50% glycerol, pH7.3.

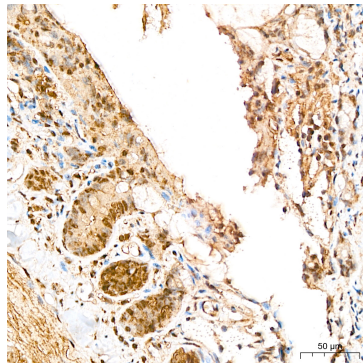
## Validation Data



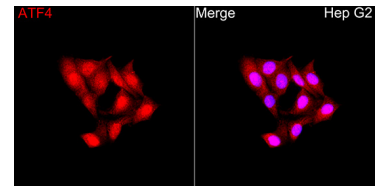
Western blot analysis of lysates from C2C12 cells, using ATF4 Rabbit pAb (A18687) at 1:500 dilution. C2C12 cells were treated by tunicamycin (2  $\mu$ g/ml) for 8 hours.  
Secondary antibody: HRP Goat Anti-Rabbit IgG (H+L) (AS014) at 1:10000 dilution.  
Lysates/proteins: 25 $\mu$ g per lane.  
Blocking buffer: 3% nonfat dry milk in TBST.  
Detection: ECL Basic Kit (RM00020).  
Exposure time: 10s.



Immunohistochemistry analysis of paraffin-embedded Mouse colon tissue using ATF4 Rabbit pAb (A18687) at a dilution of 1:400 (40x lens). High pressure antigen retrieval was performed with 0.01 M citrate buffer (pH 6.0) prior to IHC staining.



Immunohistochemistry analysis of paraffin-embedded Rat colon tissue using ATF4 Rabbit pAb (A18687) at a dilution of 1:400 (40x lens). High pressure antigen retrieval was performed with 0.01 M citrate buffer (pH 6.0) prior to IHC staining.



Immunofluorescence analysis of Hep G2 cells using ATF4 Rabbit pAb (A18687) at a dilution of 1:100 (40x lens). Secondary antibody: Cy3 Goat Anti-Rabbit IgG (H+L) (AS007) at 1:500 dilution. Blue: DAPI for nuclear staining.