

VAMP7 Rabbit pAb

Catalog No.: A18698

1 Publications

Basic Information

Observed MW

25kDa

Calculated MW

25kDa

Category

Primary antibody

Applications

ELISA, WB, IF/ICC

Cross-Reactivity

Human, Mouse, Rat

Background

This gene encodes a transmembrane protein that is a member of the soluble N-ethylmaleimide-sensitive factor attachment protein receptor (SNARE) family. The encoded protein localizes to late endosomes and lysosomes and is involved in the fusion of transport vesicles to their target membranes. Alternate splicing results in multiple transcript variants.

Recommended Dilutions

WB 1:100 - 1:500

IF/ICC 1:50 - 1:200

Immunogen Information

Gene ID

6845

Swiss Prot

P51809

Immunogen

Recombinant fusion protein containing a sequence corresponding to amino acids 2-121 of human VAMP7 (P51809).

Synonyms

SYBL1; TIVAMP; VAMP-7; TI-VAMP; VAMP7

Contact

☎ | 400-999-6126

✉ | cn.market@abclonal.com.cn

🌐 | www.abclonal.com.cn

Product Information

Source

Rabbit

Isotype

IgG

Purification

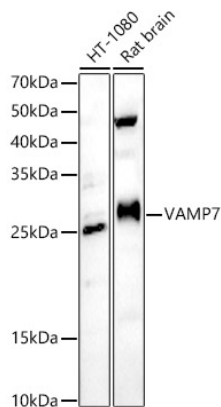
Affinity purification

Storage

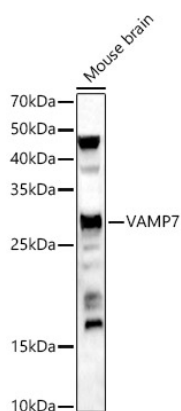
Store at -20°C. Avoid freeze / thaw cycles.

Buffer: PBS with 0.01% thimerosal, 50% glycerol, pH7.3.

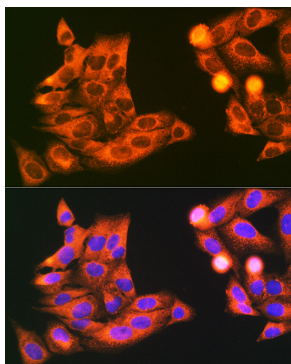
Validation Data



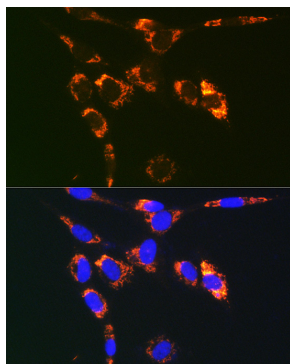
Western blot analysis of various lysates, using VAMP7 Rabbit pAb (A18698) at 1:500 dilution.
Secondary antibody: HRP Goat Anti-Rabbit IgG (H+L) (AS014) at 1:10000 dilution.
Lysates/proteins: 25µg per lane.
Blocking buffer: 3% nonfat dry milk in TBST.
Detection: ECL Enhanced Kit (RM00021).
Exposure time: 60s.



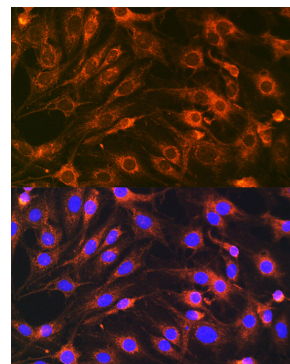
Western blot analysis of lysates from Mouse brain, using VAMP7 Rabbit pAb (A18698) at 1:500 dilution.
Secondary antibody: HRP Goat Anti-Rabbit IgG (H+L) (AS014) at 1:10000 dilution.
Lysates/proteins: 25µg per lane.
Blocking buffer: 3% nonfat dry milk in TBST.
Detection: ECL Enhanced Kit (RM00021).
Exposure time: 180s.



Immunofluorescence analysis of U2OS cells using VAMP7 Rabbit pAb (A18698) at dilution of 1:100. Secondary antibody: Cy3 Goat Anti-Rabbit IgG (H+L) (AS007) at 1:500 dilution. Blue: DAPI for nuclear staining.



Immunofluorescence analysis of NIH/3T3 cells using VAMP7 Rabbit pAb (A18698) at dilution of 1:100. Secondary antibody: Cy3 Goat Anti-Rabbit IgG (H+L) (AS007) at 1:500 dilution. Blue: DAPI for nuclear staining.



Immunofluorescence analysis of C6 cells using VAMP7 Rabbit pAb (A18698) at dilution of 1:100. Secondary antibody: Cy3 Goat Anti-Rabbit IgG (H+L) (AS007) at 1:500 dilution. Blue: DAPI for nuclear staining.