

GABA A Receptor beta 2 (GABRB2) Rabbit pAb

Catalog No.: A1876 **1 Publications**

Basic Information

Observed MW

55kDa

Calculated MW

59kDa

Category

Primary antibody

Applications

ELISA, WB

Cross-Reactivity

Human, Mouse

Background

The gamma-aminobutyric acid (GABA) A receptor is a multisubunit chloride channel that mediates the fastest inhibitory synaptic transmission in the central nervous system. This gene encodes GABA A receptor, beta 2 subunit. It is mapped to chromosome 5q34 in a cluster comprised of genes encoding alpha 1 and gamma 2 subunits of the GABA A receptor. Alternative splicing of this gene generates 2 transcript variants, differing by a 114 bp insertion.

Recommended Dilutions

WB 1:500 - 1:2000

Immunogen Information

Gene ID

2561

Swiss Prot

P47870

Immunogen

Recombinant fusion protein containing a sequence corresponding to amino acids 26-244 of human GABA A Receptor beta 2 (GABA A Receptor beta 2 (GABRB2)) (NP_000804.1).

Synonyms

DEE92; ICEE2; GABA A Receptor beta 2 (GABRB2)

Contact

 | 400-999-6126

 | cn.market@abclonal.com.cn

 | www.abclonal.com.cn

Product Information

Source

Rabbit

Isotype

IgG

Purification

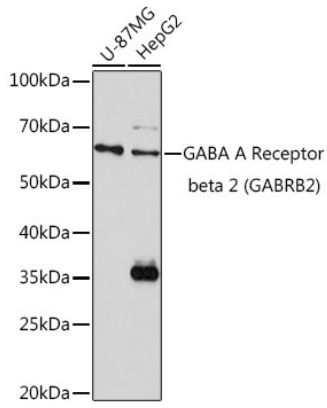
Affinity purification

Storage

Store at -20°C. Avoid freeze / thaw cycles.

Buffer: PBS with 0.02% sodium azide, 50% glycerol, pH 7.3.

Validation Data



Western blot analysis of various lysates using GABA A Receptor beta 2 (GABRB2) Rabbit pAb (A1876) at 1:1000 dilution.
Secondary antibody: HRP Goat Anti-Rabbit IgG (H+L) (AS014) at 1:10000 dilution.
Lysates/proteins: 25µg per lane.
Blocking buffer: 3% nonfat dry milk in TBST.
Detection: ECL Basic Kit (RM00020).
Exposure time: 180s.