

ZFP36 Rabbit pAb

Catalog No.: A1878

1 Publications

Basic Information

Observed MW

40-48kDa

Calculated MW

34kDa

Category

Primary antibody

Applications

WB, ELISA

Cross-Reactivity

Human, Mouse

Background

Enables several functions, including 14-3-3 protein binding activity; heat shock protein binding activity; and mRNA 3'-UTR AU-rich region binding activity. Involved in several processes, including cellular response to cytokine stimulus; cellular response to growth factor stimulus; and regulation of gene expression. Acts upstream of or within mRNA catabolic process. Located in cytoplasmic ribonucleoprotein granule; cytosol; and nucleus. Part of ribonucleoprotein complex. Colocalizes with RISC-loading complex.

Recommended Dilutions

WB 1:500 - 1:1000

ELISA Recommended starting concentration is 1 µg/mL. Please optimize the concentration based on your specific assay requirements.

Immunogen Information

Gene ID

7538

Swiss Prot

P26651

Immunogen

Recombinant protein (or fragment). This information is considered to be commercially sensitive.

Synonyms

TTP; G0S24; GOS24; TIS11; NUP475; zfp-36; RNF162A; ZFP36

Contact

☎ | 400-999-6126

✉ | cn.market@abclonal.com.cn

🌐 | www.abclonal.com.cn

Product Information

Source

Rabbit

Isotype

IgG

Purification

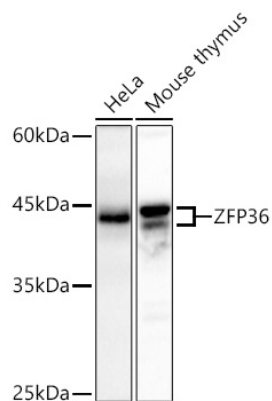
Affinity purification

Storage

Store at -20°C. Avoid freeze / thaw cycles.

Buffer: PBS with 0.05% proclin300, 50% glycerol, pH7.3.

Validation Data



Western blot analysis of various lysates using ZFP36 Rabbit pAb (A1878) at 1:500 dilution incubated overnight at 4°C.

Secondary antibody: HRP-conjugated Goat anti-Rabbit IgG (H+L) (AS014) at 1:10000 dilution.

Lysates/proteins: 25 µg per lane.

Blocking buffer: 3% nonfat dry milk in TBST.

Detection: ECL Basic Kit (RM00020)

Exposure time: 180 s.