

# Lactic acid-Histone H3-K18 Rabbit pAb

Catalog No.: A18807 **2 Publications**

## Basic Information

### Observed MW

17kDa

### Calculated MW

15kDa

### Category

Primary antibody

### Applications

ELISA,DB,WB

### Cross-Reactivity

Human, Mouse, Rat, Other (Wide Range Predicted)

## Background

Histones are basic nuclear proteins that are responsible for the nucleosome structure of the chromosomal fiber in eukaryotes. This structure consists of approximately 146 bp of DNA wrapped around a nucleosome, an octamer composed of pairs of each of the four core histones (H2A, H2B, H3, and H4). The chromatin fiber is further compacted through the interaction of a linker histone, H1, with the DNA between the nucleosomes to form higher order chromatin structures. This gene is intronless and encodes a replication-dependent histone that is a member of the histone H3 family. Transcripts from this gene lack polyA tails; instead, they contain a palindromic termination element. This gene is found in the large histone gene cluster on chromosome 6p22-p21.3.

## Recommended Dilutions

DB 1:500 - 1:4000

WB 1:500 - 1:2000

## Immunogen Information

### Gene ID

8290/8350

### Swiss Prot

Q16695/P68431

### Immunogen

A synthetic lactylated peptide around K18 of human Histone H3 (NP\_003520.1).

### Synonyms

H3/A; H3C2; H3C3; H3C4; H3C6; H3C7; H3C8; H3FA; H3C10; H3C11; H3C12; HIST1H3A; Lactic acid-Histone H3-K18

## Contact

 | 400-999-6126 | [cn.market@abclonal.com.cn](mailto:cn.market@abclonal.com.cn) | [www.abclonal.com.cn](http://www.abclonal.com.cn)

## Product Information

### Source

Rabbit

### Isotype

IgG

### Purification

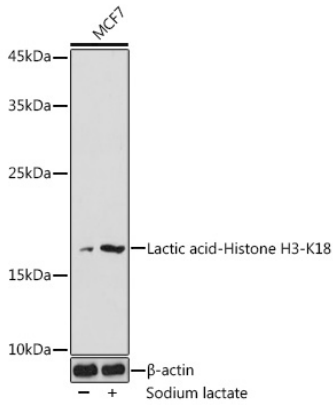
Affinity purification

### Storage

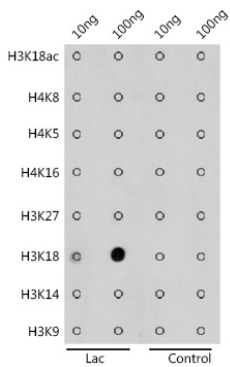
Store at -20°C. Avoid freeze / thaw cycles.

Buffer: PBS with 0.01% thimerosal, 50% glycerol, pH7.3.

## Validation Data



Western blot analysis of lysates from MCF7 cells, using Lactic acid-Histone H3-K18 Rabbit pAb (A18807) at 1:500 dilution. MCF7 cells were treated by Sodium lactate (100mM) for 24h.  
 Secondary antibody: HRP Goat Anti-Rabbit IgG (H+L) (AS014) at 1:10000 dilution.  
 Lysates/proteins: 25µg per lane.  
 Blocking buffer: 3% BSA.  
 Detection: ECL Basic Kit (RM00020).  
 Exposure time: 5min.



Dot-blot analysis of all sorts of peptides using Lactic acid-Histone H3-K18 antibody (A18807) at 1:1000 dilution.