

# Methyl-HP1 gamma/CBX3-H175 Rabbit pAb

Catalog No.: A18812

## Basic Information

### Observed MW

Refer to figures

### Calculated MW

21kDa

### Category

Primary antibody

### Applications

ELISA,DB

### Cross-Reactivity

Human

## Background

At the nuclear envelope, the nuclear lamina and heterochromatin are adjacent to the inner nuclear membrane. The protein encoded by this gene binds DNA and is a component of heterochromatin. This protein also can bind lamin B receptor, an integral membrane protein found in the inner nuclear membrane. The dual binding functions of the encoded protein may explain the association of heterochromatin with the inner nuclear membrane. This protein binds histone H3 tails methylated at Lys-9 sites. This protein is also recruited to sites of ultraviolet-induced DNA damage and double-strand breaks. Two transcript variants encoding the same protein but differing in the 5' UTR, have been found for this gene.

## Recommended Dilutions

DB 1:500 - 1:1000

## Immunogen Information

### Gene ID

11335

### Swiss Prot

Q13185

### Immunogen

Recombinant fusion protein containing a sequence corresponding to amino acids 1-183 of human HP1 gamma/CBX3 (NP\_009207.2).

### Synonyms

HECH; HP1-GAMMA; HP1Hs-gamma; Methyl-HP1 gamma/CBX3-H175

## Contact

☎ | 400-999-6126

✉ | [cn.market@abclonal.com.cn](mailto:cn.market@abclonal.com.cn)

🌐 | [www.abclonal.com.cn](http://www.abclonal.com.cn)

## Product Information

### Source

Rabbit

### Isotype

IgG

### Purification

Affinity purification

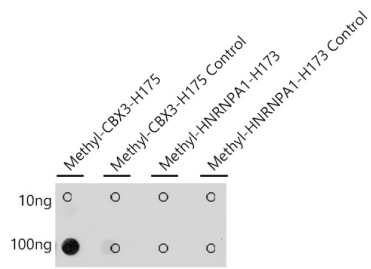
### Storage

Store at -20°C. Avoid freeze / thaw cycles.

Buffer: PBS with 0.01% thimerosal, 50% glycerol, pH7.3.

## Validation Data

---



Dot-blot analysis of all sorts of peptides using Methyl-HP1 gamma/CBX3-H175 Rabbit pAb (A18812) at 1:1000 dilution.