

DNA-RNA Hybrid Mouse mAb

Catalog No.: A18843

Basic Information

Observed MW

Calculated MW

Category

Primary antibody

Applications

DB,ELISA

Cross-Reactivity

Human, Mouse, Rat, Other (Wide Range Predicted)

CloneNo number

AMC0335

Background

Recommended Dilutions

DB 1:500 - 1:2000

ELISA Recommended starting concentration is 1 µg/mL. Please optimize the concentration based on your specific assay requirements.

Immunogen Information

Gene ID

Swiss Prot

Immunogen

Synthetic peptide. This information is considered to be commercially sensitive.

Synonyms

S9.6

Contact

☎ | 400-999-6126

✉ | cn.market@abclonal.com.cn

🌐 | www.abclonal.com.cn

Product Information

Source

Mouse

Isotype

IgG2a κ

Purification

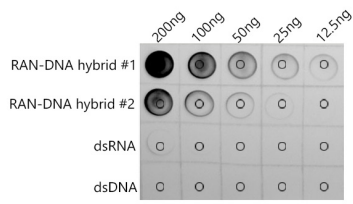
Affinity purification

Storage

Store at -20°C. Avoid freeze / thaw cycles.

Buffer: PBS with 0.01% thimerosal,50% glycerol,pH7.3.

Validation Data



Dot-blot analysis of all sorts of peptides using DNA-RNA Hybrid Mouse mAb (A18843) at 1:1000 dilution.