

Rad21 Rabbit pAb

Catalog No.: A18850

1 Publications

Basic Information

Observed MW

130kDa

Calculated MW

72kDa

Category

Primary antibody

Applications

WB, IHC-P, IF/ICC, IP, ELISA, ChIP

Cross-Reactivity

Human, Mouse, Rat

Background

The protein encoded by this gene is highly similar to the gene product of *Schizosaccharomyces pombe rad21*, a gene involved in the repair of DNA double-strand breaks, as well as in chromatid cohesion during mitosis. This protein is a nuclear phosphoprotein, which becomes hyperphosphorylated in cell cycle M phase. The highly regulated association of this protein with mitotic chromatin specifically at the centromere region suggests its role in sister chromatid cohesion in mitotic cells.

Recommended Dilutions

WB 1:500 - 1:1000**IHC-P** 1:50 - 1:200**IF/ICC** 1:50 - 1:200**IP** 0.5µg-4µg antibody for
200µg-400µg extracts of
whole cells**ELISA** Recommended starting
concentration is 1 µg/mL.
Please optimize the
concentration based on
your specific assay
requirements.**ChIP** 5µg antibody for
10µg-15µg of Chromatin

Immunogen Information

Gene ID

5885

Swiss Prot

O60216

Immunogen

Recombinant protein (or fragment). This information is considered to be commercially sensitive.

Synonyms

MGS; HR21; MCD1; NXP1; SCC1; CDLS4; hHR21; HRAD21; Rad21

Product Information

Source

Rabbit

Isotype

IgG

Purification

Affinity purification

Storage

Store at -20°C. Avoid freeze / thaw cycles.

Buffer: PBS with 0.05% proclin300, 50% glycerol, pH7.3.

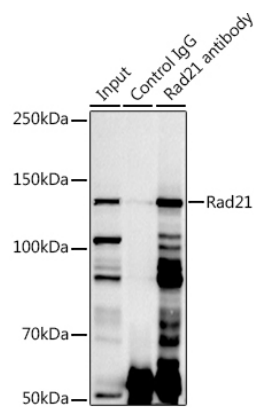
Contact

☎ | 400-999-6126

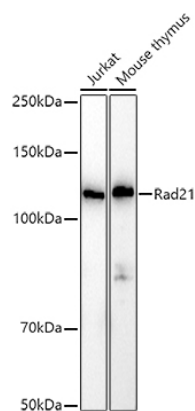
✉ | cn.market@abclonal.com.cn

🌐 | www.abclonal.com.cn

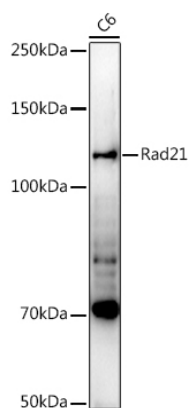
Validation Data



Immunoprecipitation analysis of 300 µg extracts of Jurkat cells using 3 µg Rad21 antibody (A18850). Western blot was performed from the immunoprecipitate using Rad21 antibody (A18850) at a dilution of 1:1000.

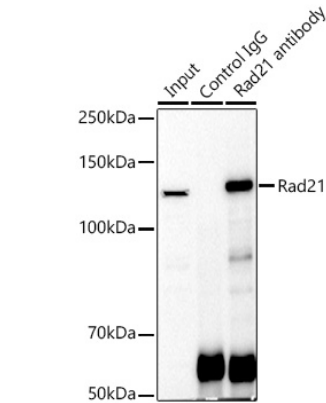


Western blot analysis of various lysates using Rad21 Rabbit pAb (A18850) at 1:1000 dilution. Secondary antibody: HRP-conjugated Goat anti-Rabbit IgG (H+L) (AS014) at 1:10000 dilution. Lysates/proteins: 25µg per lane. Blocking buffer: 3% nonfat dry milk in TBST. Detection: ECL Basic Kit (RM00020). Exposure time: 10s.

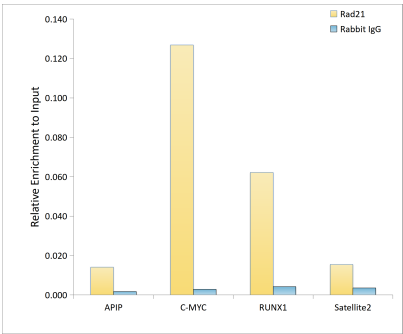


Western blot analysis of lysates from C6 cells, using Rad21 Rabbit pAb (A18850) at 1:1000 dilution. Secondary antibody: HRP-conjugated Goat anti-Rabbit IgG (H+L) (AS014) at 1:10000 dilution. Lysates/proteins: 25µg per lane. Blocking buffer: 3% nonfat dry milk in TBST. Detection: ECL Enhanced Kit (RM00021). Exposure time: 90s.

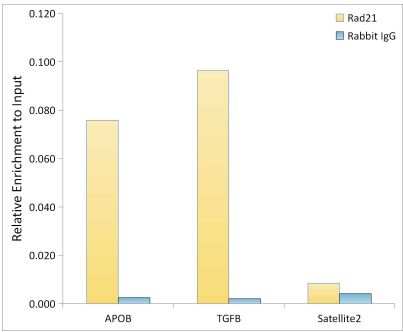
Validation Data



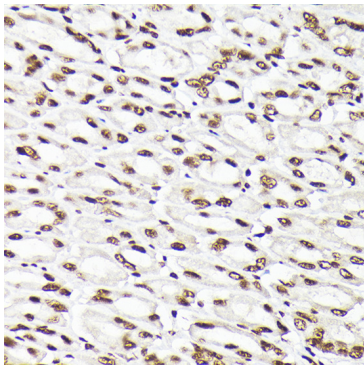
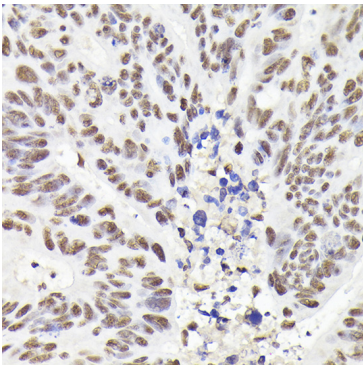
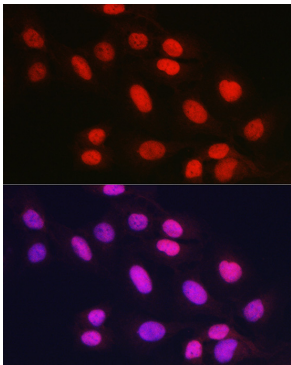
Immunoprecipitation analysis of 300 µg extracts of Jurkat cells using 3 µg Rad21 antibody (A18850). Western blot was performed from the immunoprecipitate using Rad21 antibody (A18850) at a dilution of 1:1000.



Chromatin immunoprecipitation analysis of extracts of A-549 cells, using Rad21 antibody (A18850) and rabbit IgG. The amount of immunoprecipitated DNA was checked by quantitative PCR. Histogram was constructed by the ratios of the immunoprecipitated DNA to the input.

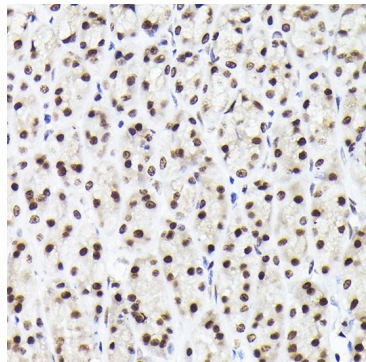


Chromatin immunoprecipitation analysis of extracts of A-549 cells, using Rad21 antibody (A18850) and rabbit IgG. The amount of immunoprecipitated DNA was checked by quantitative PCR. Histogram was constructed by the ratios of the immunoprecipitated DNA to the input.



Validation Data

Immunofluorescence analysis of U2OS cells using Rad21 Rabbit pAb (A18850) at dilution of 1:100 (40x lens). Secondary antibody: Cy3-conjugated Goat anti-Rabbit IgG (H+L) (AS007) at 1:500 dilution. Blue: DAPI for nuclear staining.



Immunohistochemistry analysis of paraffin-embedded Human colon carcinoma using Rad21 Rabbit pAb (A18850) at dilution of 1:200 (40x lens). High pressure antigen retrieval performed with 0.01M Citrate buffer (pH 6.0) prior to IHC staining.

Immunohistochemistry analysis of paraffin-embedded Mouse stomach using Rad21 Rabbit pAb (A18850) at dilution of 1:200 (40x lens). High pressure antigen retrieval performed with 0.01M Citrate buffer (pH 6.0) prior to IHC staining.

Immunohistochemistry analysis of paraffin-embedded Rat stomach using Rad21 Rabbit pAb (A18850) at dilution of 1:200 (40x lens). High pressure antigen retrieval performed with 0.01M Citrate buffer (pH 6.0) prior to IHC staining.