

# SHH Rabbit pAb

Catalog No.: A18863

## Basic Information

### Observed MW

45kDa

### Calculated MW

48kDa

### Category

Primary antibody

### Applications

ELISA,WB

### Cross-Reactivity

Human, Mouse, Rat

## Background

Enables glycosaminoglycan binding activity; laminin-1 binding activity; and patched binding activity. Involved in several processes, including hematopoietic or lymphoid organ development; positive regulation of T cell activation; and regulation of smooth muscle cell differentiation. Acts upstream of or within several processes, including animal organ development; limb morphogenesis; and neurogenesis. Located in several cellular components, including cell surface; extracellular space; and membrane raft. Is expressed in several structures, including alimentary system; central nervous system; genitourinary system; limb bud; and sensory organ. Used to study brachydactyly type A1 and holoprosencephaly 3. Human ortholog(s) of this gene implicated in several diseases, including Hirschsprung's disease; holoprosencephaly (multiple); hypoplastic or aplastic tibia with polydactyly; middle cerebral artery infarction; and polydactyly. Orthologous to human SHH (sonic hedgehog signaling molecule).

## Recommended Dilutions

WB 1:500 - 1:1000

## Immunogen Information

### Gene ID

20423

### Swiss Prot

Q62226

### Immunogen

Recombinant fusion protein containing a sequence corresponding to amino acids 187-281 of mouse SHH (NP\_033196.1).

### Synonyms

Hx; Dsh; Hhg1; Hxl3; ShhNC; M100081; 9530036011Rik; SHH

## Contact

☎ | 400-999-6126

✉ | [cn.market@abclonal.com.cn](mailto:cn.market@abclonal.com.cn)

🌐 | [www.abclonal.com.cn](http://www.abclonal.com.cn)

## Product Information

### Source

Rabbit

### Isotype

IgG

### Purification

Affinity purification

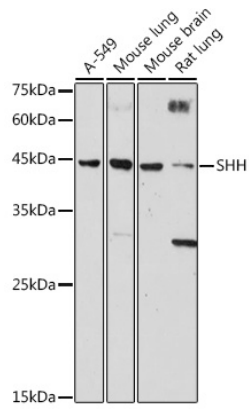
### Storage

Store at -20°C. Avoid freeze / thaw cycles.

Buffer: PBS with 0.01% thimerosal, 50% glycerol, pH7.3.

## Validation Data

---



Western blot analysis of various lysates using SHH Rabbit pAb (A18863) at 1:1000 dilution.  
Secondary antibody: HRP Goat Anti-Rabbit IgG (H+L) (AS014) at 1:10000 dilution.  
Lysates/proteins: 25 $\mu$ g per lane.  
Blocking buffer: 3% nonfat dry milk in TBST.  
Detection: ECL Basic Kit (RM00020).  
Exposure time: 30s.