

DNA Ligase III/LIG3 Rabbit pAb

Catalog No.: A1887 **4 Publications**

Basic Information

Observed MW

113kDa

Calculated MW

113kDa

Category

Primary antibody

Applications

ELISA, WB, IP

Cross-Reactivity

Human, Mouse

Background

This gene is a member of the DNA ligase family. Each member of this family encodes a protein that catalyzes the joining of DNA ends but they each have a distinct role in DNA metabolism. The protein encoded by this gene is involved in excision repair and is located in both the mitochondria and nucleus, with translation initiation from the upstream start codon allowing for transport to the mitochondria and translation initiation from a downstream start codon allowing for transport to the nucleus. Additionally, alternate transcriptional splice variants, encoding different isoforms, have been characterized.

Recommended Dilutions

WB 1:500 - 1:2000

IP 0.5µg-4µg antibody for
200µg-400µg extracts of
whole cells

Immunogen Information

Gene ID

3980

Swiss Prot

P49916

Immunogen

Recombinant fusion protein containing a sequence corresponding to amino acids 730-1009 of human DNA Ligase III/LIG3 (NP_039269.2).

Synonyms

LIG2; MTDP520; LIG3alpha; DNA Ligase III/LIG3

Contact

☎ | 400-999-6126

✉ | cn.market@abclonal.com.cn

🌐 | www.abclonal.com.cn

Product Information

Source

Rabbit

Isotype

IgG

Purification

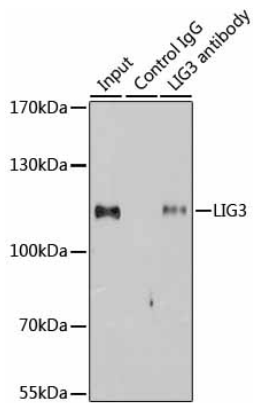
Affinity purification

Storage

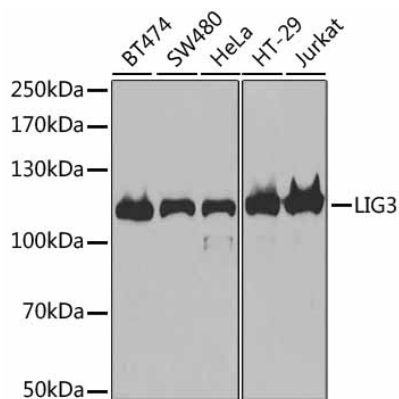
Store at -20°C. Avoid freeze / thaw cycles.

Buffer: PBS with 0.02% sodium azide, 50% glycerol, pH7.3.

Validation Data



Immunoprecipitation analysis of 200 μ g extracts of Jurkat cells using 1 μ g DNA Ligase III/LIG3 antibody (A1887). Western blot was performed from the immunoprecipitate using DNA Ligase III/LIG3 antibody (A1887) at a dilution of 1:1000.



Western blot analysis of various lysates using DNA Ligase III/LIG3 Rabbit pAb (A1887) at 1:1000 dilution. Secondary antibody: HRP-conjugated Goat anti-Rabbit IgG (H+L) (AS014) at 1:10000 dilution. Lysates/proteins: 25 μ g per lane. Blocking buffer: 3% nonfat dry milk in TBST.