

C5AR1 Rabbit pAb

Catalog No.: A1900

1 Publications

Basic Information

Observed MW

45kDa

Calculated MW

39kDa

Category

Primary antibody

Applications

WB,IHC-P,ELISA

Cross-Reactivity

Human, Mouse, Rat

Background

Enables G protein-coupled receptor activity and complement component C5a receptor activity. Involved in several processes, including complement component C5a signaling pathway; mRNA transcription by RNA polymerase II; and positive regulation of ERK1 and ERK2 cascade. Located in apical part of cell and basolateral plasma membrane. Biomarker of Alzheimer's disease; asthma; chronic obstructive pulmonary disease; rhinitis; and severe acute respiratory syndrome.

Recommended Dilutions

WB 1:500 - 1:1000

IHC-P 1:50 - 1:200

ELISA Recommended starting concentration is 1 µg/mL. Please optimize the concentration based on your specific assay requirements.

Immunogen Information

Gene ID

728

Swiss Prot

P21730

Immunogen

Recombinant protein (or fragment). This information is considered to be commercially sensitive.

Synonyms

C5A; C5AR; C5R1; CD88; C5AR1

Contact

☎ | 400-999-6126

✉ | cn.market@abclonal.com.cn

🌐 | www.abclonal.com.cn

Product Information

Source

Rabbit

Isotype

IgG

Purification

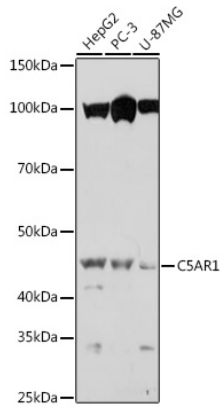
Affinity purification

Storage

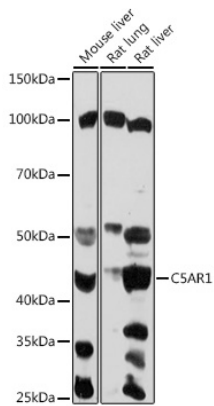
Store at -20°C. Avoid freeze / thaw cycles.

Buffer: PBS with 0.09% sodium azide 50% glycerol pH7.3

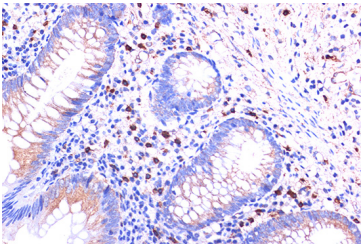
Validation Data



Western blot analysis of various lysates using C5AR1 Rabbit pAb (A1900) at 1:1000 dilution. Secondary antibody: HRP-conjugated Goat anti-Rabbit IgG (H+L) (AS014) at 1:10000 dilution. Lysates/proteins: 25µg per lane. Blocking buffer: 3% nonfat dry milk in TBST. Detection: ECL Basic Kit (RM00020). Exposure time: 10s.



Western blot analysis of various lysates using C5AR1 Rabbit pAb (A1900) at 1:1000 dilution. Secondary antibody: HRP-conjugated Goat anti-Rabbit IgG (H+L) (AS014) at 1:10000 dilution. Lysates/proteins: 25µg per lane. Blocking buffer: 3% nonfat dry milk in TBST. Detection: ECL Basic Kit (RM00020). Exposure time: 30s.



Immunohistochemistry analysis of paraffin-embedded Human appendix using C5AR1 Rabbit pAb (A1900) at dilution of 1:100 (40x lens). Microwave antigen retrieval performed with 0.01M PBS Buffer (pH 7.2) prior to IHC staining.