

BRD3 Rabbit pAb

Catalog No.: A19001 **1 Publications**

Basic Information

Observed MW

100kDa

Calculated MW

80kDa

Category

Primary antibody

Applications

ELISA, WB

Cross-Reactivity

Human, Mouse, Rat

Background

This gene was identified based on its homology to the gene encoding the RING3 protein, a serine/threonine kinase. The gene localizes to 9q34, a region which contains several major histocompatibility complex (MHC) genes. The function of the encoded protein is not known.

Recommended Dilutions

WB 1:500 - 1:1000

Immunogen Information

Gene ID

8019

Swiss Prot

Q15059

Immunogen

A synthetic peptide corresponding to a sequence within amino acids 500-600 of human BRD3 (NP_031397.1).

Synonyms

ORFX; FSHRG2; RING3L; BRD3

Contact

 | 400-999-6126

 | cn.market@abclonal.com.cn

 | www.abclonal.com.cn

Product Information

Source

Rabbit

Isotype

IgG

Purification

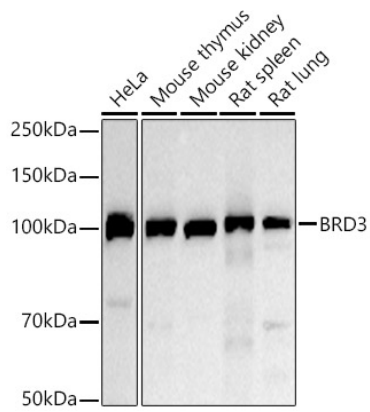
Affinity purification

Storage

Store at -20°C. Avoid freeze / thaw cycles.

Buffer: PBS with 0.05% proclin300, 50% glycerol, pH7.3.

Validation Data



Western blot analysis of various lysates using BRD3 Rabbit pAb (A19001) at 1:1000 dilution.
Secondary antibody: HRP Goat Anti-Rabbit IgG (H+L) (AS014) at 1:10000 dilution.
Lysates/proteins: 25 μ g per lane.
Blocking buffer: 3% nonfat dry milk in TBST.
Detection: ECL Basic Kit (RM00020).
Exposure time: 30s.