

CD11a/LFA-1A/ITGAL Rabbit mAb

Catalog No.: A19009 **Recombinant**

Basic Information

Observed MW

180kDa

Calculated MW

129kDa

Category

Primary antibody

Applications

ELISA, WB, IHC-P

Cross-Reactivity

Human

CloneNo number

ARC0344

Background

ITGAL encodes the integrin alpha L chain. Integrins are heterodimeric integral membrane proteins composed of an alpha chain and a beta chain. This I-domain containing alpha integrin combines with the beta 2 chain (ITGB2) to form the integrin lymphocyte function-associated antigen-1 (LFA-1), which is expressed on all leukocytes. LFA-1 plays a central role in leukocyte intercellular adhesion through interactions with its ligands, ICAMs 1-3 (intercellular adhesion molecules 1 through 3), and also functions in lymphocyte costimulatory signaling. Two transcript variants encoding different isoforms have been found for this gene.

Recommended Dilutions

WB	1:500 - 1:2000
IHC-P	1:50 - 1:200

Immunogen Information

Gene ID

3683

Swiss Prot

P20701

Immunogen

A synthetic peptide corresponding to a sequence within amino acids 1071-1170 of human CD11a/LFA-1A/ITGAL (P20701).

Synonyms

CD11A; LFA-1; LFA1A; CD11a/LFA-1A/ITGAL

Contact

☎ | 400-999-6126

✉ | cn.market@abclonal.com.cn

🌐 | www.abclonal.com.cn

Product Information

Source

Rabbit

Isotype

IgG

Purification

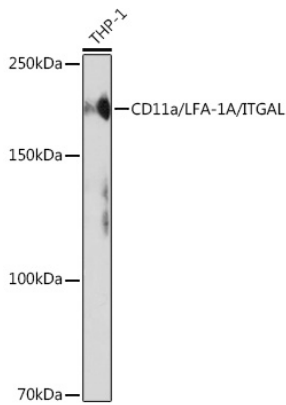
Affinity purification

Storage

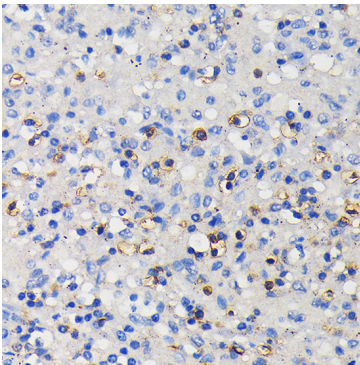
Store at -20°C. Avoid freeze / thaw cycles.

Buffer: PBS with 0.02% sodium azide, 0.05% BSA, 50% glycerol, pH7.3.

Validation Data



Western blot analysis of lysates from THP-1 cells, using CD11a/LFA-1A/ITGAL Rabbit mAb (A19009) at 1:1000 dilution.
Secondary antibody: HRP Goat Anti-Rabbit IgG (H+L) (AS014) at 1:10000 dilution.
Lysates/proteins: 25µg per lane.
Blocking buffer: 3% nonfat dry milk in TBST.
Detection: ECL Enhanced Kit (RM00021).
Exposure time: 3min.



Immunohistochemistry analysis of paraffin-embedded human spleen using CD11a/LFA-1A/ITGAL Rabbit mAb (A19009) at dilution of 1:100 (40x lens). Perform microwave antigen retrieval with 10 mM PBS buffer pH 7.2 before commencing with IHC staining protocol.