

# CD14 Rabbit mAb

Catalog No.: A19011 **Recombinant** **4 Publications**

## Basic Information

### Observed MW

50-65kDa

### Calculated MW

40kDa

### Category

Primary antibody

### Applications

WB,IHC-P,IF/ICC,FC,ELISA

### Cross-Reactivity

Human, Mouse

### CloneNo number

ARC0353

## Background

The protein encoded by this gene is a surface antigen that is preferentially expressed on monocytes/macrophages. It cooperates with other proteins to mediate the innate immune response to bacterial lipopolysaccharide, and to viruses. This gene has been identified as a target candidate in the treatment of SARS-CoV-2-infected patients to potentially lessen or inhibit a severe inflammatory response. Alternative splicing results in multiple transcript variants encoding the same protein.

## Recommended Dilutions

**WB** 1:1000 - 1:2000**IHC-P** 1:200 - 1:800**IF/ICC** 1:100 - 1:400**FC** 1:50 - 1:200**ELISA** Recommended starting concentration is 1 µg/mL. Please optimize the concentration based on your specific assay requirements.

## Immunogen Information

### Gene ID

929

### Swiss Prot

P08571

### Immunogen

A synthetic peptide corresponding to a sequence within amino acids 250-350 of human CD14 (P08571).

### Synonyms

CD14

## Contact

 | 400-999-6126 | [cn.market@abclonal.com.cn](mailto:cn.market@abclonal.com.cn) | [www.abclonal.com.cn](http://www.abclonal.com.cn)

## Product Information

### Source

Rabbit

### Isotype

IgG

### Purification

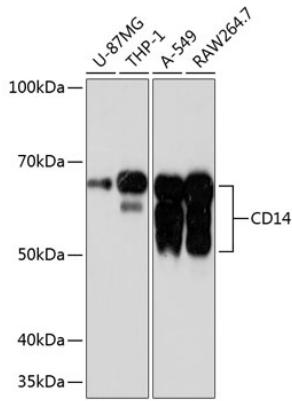
Affinity purification

### Storage

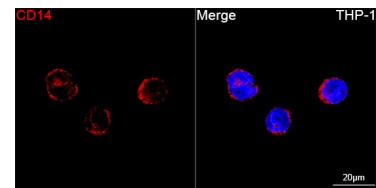
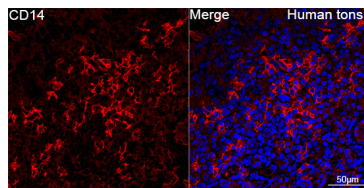
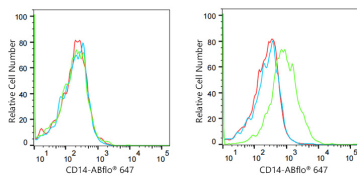
Store at -20°C. Avoid freeze / thaw cycles.

Buffer: PBS with 0.02% sodium azide,0.05% BSA,50% glycerol,pH7.3.

## Validation Data



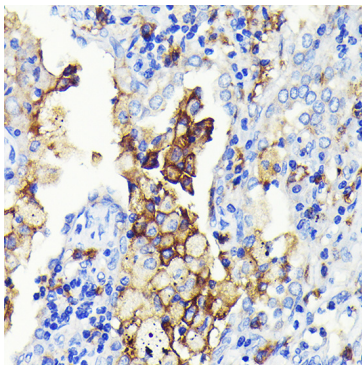
Western blot analysis of various lysates using CD14 Rabbit mAb (A19011) at 1:1000 dilution. Secondary antibody: HRP-conjugated Goat anti-Rabbit IgG (H+L) (AS014) at 1:10000 dilution. Lysates/proteins: 25µg per lane. Blocking buffer: 3% nonfat dry milk in TBST. Detection: ECL Basic Kit (RM00020). Exposure time: 3min.



Flow cytometry:  $1 \times 10^6$  Jurkat cells (negative control, left) and A549 cells (right) were surface-stained with CD14 Rabbit mAb (A19011, 10 µg/mL, green line) or Rabbit IgG isotype control (AC042, 10 µg/mL, blue line), followed by Alexa Fluor 647 conjugated goat anti-rabbit pAb (1:600 dilution) staining. Non-fluorescently stained cells were used as blank control (red line).

Confocal imaging of paraffin-embedded Human tonsil using CD14 Rabbit mAb (A19011, dilution 1:100) followed by a further incubation with Cy3 Goat Anti-Rabbit IgG (H+L) (AS007, dilution 1:500) (Red). DAPI was used for nuclear staining (Blue). Objective: 40x. Perform high pressure antigen retrieval with 0.01 M citRate buffer (pH 6.0) prior to IF staining.

Confocal imaging of THP-1 cells using CD14 Rabbit mAb (A19011, dilution 1:100) followed by a further incubation with Cy3 Goat Anti-Rabbit IgG (H+L) (AS007, dilution 1:500) (Red). DAPI was used for nuclear staining (Blue). Objective: 100x.



Immunohistochemistry analysis of paraffin-embedded Human lung cancer using CD14 Rabbit mAb (A19011) at dilution of 1:100 (40x lens). Microwave antigen retrieval performed with 0.01M PBS Buffer (pH 7.2) prior to IHC staining.