

LMO2 Rabbit pAb

Catalog No.: A1903 **1 Publications**

Basic Information

Observed MW

18kDa

Calculated MW

18kDa

Category

Primary antibody

Applications

ELISA, WB

Cross-Reactivity

Human, Mouse, Rat

Background

LMO2 encodes a cysteine-rich, two LIM-domain protein that is required for yolk sac erythropoiesis. The LMO2 protein has a central and crucial role in hematopoietic development and is highly conserved. The LMO2 transcription start site is located approximately 25 kb downstream from the 11p13 T-cell translocation cluster (11p13 ttc), where a number T-cell acute lymphoblastic leukemia-specific translocations occur. Alternative splicing results in multiple transcript variants encoding different isoforms.

Recommended Dilutions

WB 1:500 - 1:2000

Immunogen Information

Gene ID

4005

Swiss Prot

P25791

Immunogen

Recombinant fusion protein containing a sequence corresponding to amino acids 1-158 of human LMO2 (NP_001135788.1).

Synonyms

TTG2; LMO-2; RBTN2; RHOM2; RBTN1; LMO2

Contact

☎ | 400-999-6126

✉ | cn.market@abclonal.com.cn

🌐 | www.abclonal.com.cn

Product Information

Source

Rabbit

Isotype

IgG

Purification

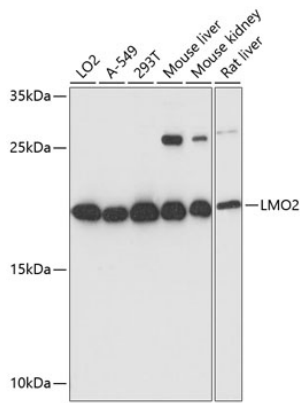
Affinity purification

Storage

Store at -20°C. Avoid freeze / thaw cycles.

Buffer: PBS with 0.01% thimerosal, 50% glycerol, pH7.3.

Validation Data



Western blot analysis of various lysates using LMO2 Rabbit pAb (A1903) at 1:3000 dilution.
Secondary antibody: HRP Goat Anti-Rabbit IgG (H+L) (AS014) at 1:10000 dilution.
Lysates/proteins: 25µg per lane.
Blocking buffer: 3% nonfat dry milk in TBST.
Detection: ECL Basic Kit (RM00020).
Exposure time: 30s.