

# CNPase Rabbit mAb

Catalog No.: A19033

Recombinant

2 Publications

## Basic Information

### Observed MW

48kDa

### Calculated MW

48kDa

### Category

Primary antibody

### Applications

ELISA, WB, IHC-P, IF/ICC

### Cross-Reactivity

Human, Mouse, Rat

### CloneNo number

ARC0388

## Background

Predicted to enable 2',3'-cyclic-nucleotide 3'-phosphodiesterase activity. Involved in substantia nigra development. Located in several cellular components, including extracellular space; microtubule; and plasma membrane. Implicated in hypomyelinating leukodystrophy 20; multiple sclerosis; and schizophrenia. Biomarker of alcoholic liver cirrhosis; multiple sclerosis; and restless legs syndrome.

## Recommended Dilutions

<b>WB</b>	1:500 - 1:2000
<b>IHC-P</b>	1:1000 - 1:5000
<b>IF/ICC</b>	1:50 - 1:200

## Immunogen Information

### Gene ID

1267

### Swiss Prot

P09543

### Immunogen

A synthetic peptide corresponding to a sequence within amino acids 322-421 of human CNPase (P09543).

### Synonyms

CNP1; HLD20; CNPase

## Contact

☎ | 400-999-6126

✉ | [cn.market@abclonal.com.cn](mailto:cn.market@abclonal.com.cn)

🌐 | [www.abclonal.com.cn](http://www.abclonal.com.cn)

## Product Information

### Source

Rabbit

### Isotype

IgG

### Purification

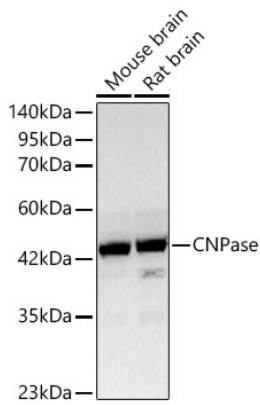
Affinity purification

### Storage

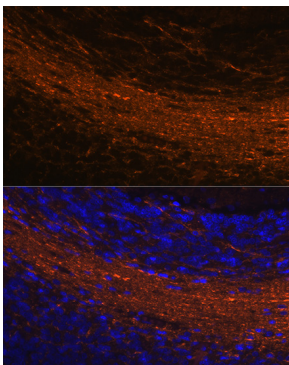
Store at -20°C. Avoid freeze / thaw cycles.

Buffer: PBS with 0.02% sodium azide, 0.05% BSA, 50% glycerol, pH7.3.

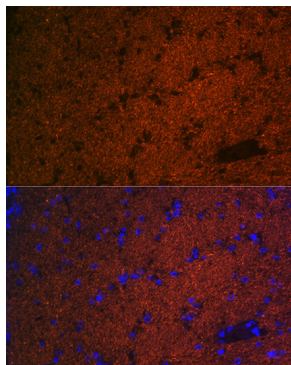
## Validation Data



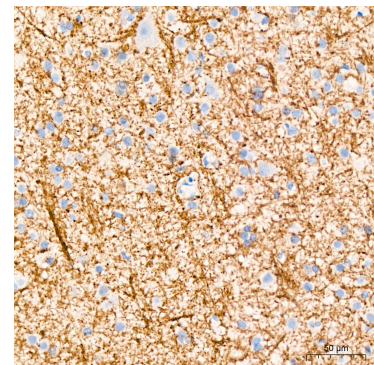
Western blot analysis of various lysates using CNPase Rabbit mAb (A19033) at 1:1000 dilution. Secondary antibody: HRP Goat Anti-Rabbit IgG (H+L) (AS014) at 1:10000 dilution. Lysates/proteins: 25µg per lane. Blocking buffer: 3% nonfat dry milk in TBST. Detection: ECL Basic Kit (RM00020). Exposure time: 10s.



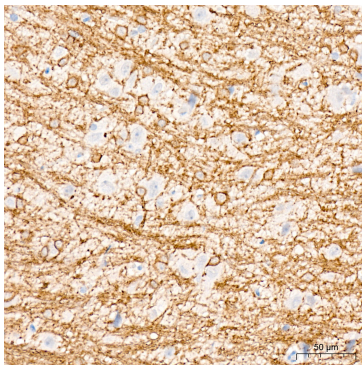
Immunofluorescence analysis of paraffin-embedded rat brain using CNPase Rabbit mAb (A19033) at dilution of 1:100 (40x lens). Secondary antibody: Cy3 Goat Anti-Rabbit IgG (H+L) (AS007) at 1:500 dilution. Blue: DAPI for nuclear staining.



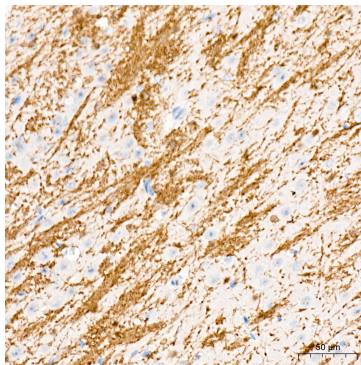
Immunofluorescence analysis of paraffin-embedded mouse brain using CNPase Rabbit mAb (A19033) at dilution of 1:100 (40x lens). Secondary antibody: Cy3 Goat Anti-Rabbit IgG (H+L) (AS007) at 1:500 dilution. Blue: DAPI for nuclear staining.



Immunohistochemistry analysis of CNPase in paraffin-embedded human brain tissue using CNPase Rabbit mAb (A19033) at a dilution of 1:1600 (40x lens). High pressure antigen retrieval was performed with 0.01 M citrate buffer (pH 6.0) prior to IHC staining.



Immunohistochemistry analysis of CNPase in paraffin-embedded rat brain tissue using CNPase Rabbit mAb (A19033) at a dilution of 1:1600 (40x lens). High pressure antigen retrieval was performed with 0.01 M citrate buffer (pH 6.0) prior to IHC staining.



Immunohistochemistry analysis of CNPase in paraffin-embedded mouse brain tissue using CNPase Rabbit mAb (A19033) at a dilution of 1:1600 (40x lens). High pressure antigen retrieval was performed with 0.01 M citrate buffer (pH 6.0) prior to IHC staining.