

eIF4E Rabbit mAb

Catalog No.: A19044 **Recombinant** **1 Publications**

Basic Information

Observed MW

25kDa

Calculated MW

25kDa

Category

Primary antibody

Applications

ELISA,WB,IP

Cross-Reactivity

Mouse, Rat

CloneNo number

ARC0447

Background

The protein encoded by this gene is a component of the eukaryotic translation initiation factor 4F complex, which recognizes the 7-methylguanosine cap structure at the 5' end of messenger RNAs. The encoded protein aids in translation initiation by recruiting ribosomes to the 5'-cap structure. Association of this protein with the 4F complex is the rate-limiting step in translation initiation. This gene acts as a proto-oncogene, and its expression and activation is associated with transformation and tumorigenesis. Several pseudogenes of this gene are found on other chromosomes. Alternative splicing results in multiple transcript variants.

Recommended Dilutions

WB 1:500 - 1:1000

IP 0.5µg-4µg antibody for
400µg-600µg extracts of
whole cells

Immunogen Information

Gene ID

1977

Swiss Prot

P06730

Immunogen

A synthetic peptide corresponding to a sequence within amino acids 118-217 of human eIF4E (P06730).

Synonyms

CBP; EIF4F; AUTS19; EIF4E1; eIF-4E; EIF4EL1; eIF4E

Contact

☎ | 400-999-6126

✉ | cn.market@abclonal.com.cn

🌐 | www.abclonal.com.cn

Product Information

Source

Rabbit

Isotype

IgG

Purification

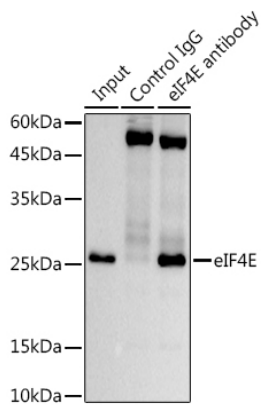
Affinity purification

Storage

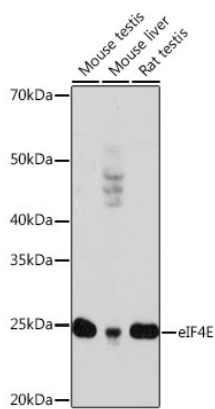
Store at -20°C. Avoid freeze / thaw cycles.

Buffer: PBS with 0.02% sodium azide,0.05% BSA,50% glycerol,pH7.3.

Validation Data



Immunoprecipitation analysis of 600 µg extracts of Mouse testis using 3 µg eIF4E antibody (A19044). Western blot was performed from the immunoprecipitate using eIF4E (A19044) at a dilution of 1:500.



Western blot analysis of various lysates using eIF4E Rabbit mAb (A19044) at 1:1000 dilution. Secondary antibody: HRP Goat Anti-Rabbit IgG (H+L) (AS014) at 1:10000 dilution. Lysates/proteins: 25µg per lane. Blocking buffer: 3% nonfat dry milk in TBST. Detection: ECL Enhanced Kit (RM00021). Exposure time: 3min.