

GRB2 Rabbit mAb

Catalog No.: A19059

Recombinant

1 Publications

Basic Information

Observed MW

25kDa

Calculated MW

25kDa

Category

Primary antibody

Applications

WB, IHC-P, IF/ICC, IP, ELISA

Cross-Reactivity

Human, Mouse, Rat

CloneNo number

ARC0430

Recommended Dilutions

| | |
|-----------|-----------------|
| WB | 1:1000 - 1:6000 |
|-----------|-----------------|

| | |
|--------------|---------------|
| IHC-P | 1:200 - 1:800 |
|--------------|---------------|

| | |
|---------------|---------------|
| IF/ICC | 1:100 - 1:800 |
|---------------|---------------|

| | |
|-----------|--|
| IP | 0.5µg-4µg antibody for 200µg-400µg extracts of whole cells |
|-----------|--|

| | |
|--------------|--|
| ELISA | Recommended starting concentration is 1 µg/mL. Please optimize the concentration based on your specific assay requirements. |
|--------------|--|

Contact

| | | |
|--|--|--------------|
|  | | 400-999-6126 |
|--|--|--------------|

| | | |
|--|--|--|
|  | | cn.market@abclonal.com.cn |
|--|--|--|

| | | |
|--|--|--|
|  | | www.abclonal.com.cn |
|--|--|--|

Background

The protein encoded by this gene binds the epidermal growth factor receptor and contains one SH2 domain and two SH3 domains. Its two SH3 domains direct complex formation with proline-rich regions of other proteins, and its SH2 domain binds tyrosine phosphorylated sequences. This gene is similar to the Sem5 gene of C.elegans, which is involved in the signal transduction pathway. Two alternatively spliced transcript variants encoding different isoforms have been found for this gene.

Immunogen Information

Gene ID

2885

Swiss Prot

P62993

Immunogen

A synthetic peptide corresponding to a sequence within amino acids 118-217 of human GRB2 (P62993).

Synonyms

ASH; Grb3-3; MST084; NCKAP2; MSTP084; EGFRBP-GRB2; GRB2

Product Information

Source

Rabbit

Isotype

IgG

Purification

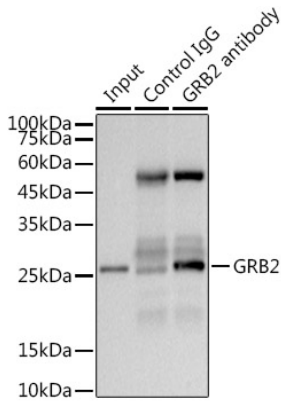
Affinity purification

Storage

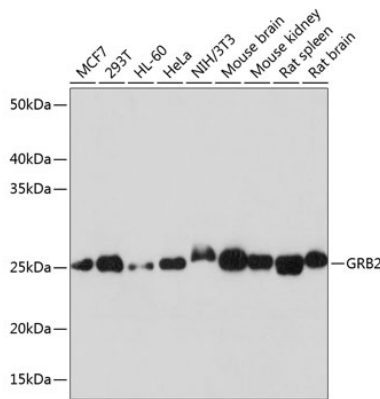
Store at -20°C. Avoid freeze / thaw cycles.

Buffer: PBS with 0.02% sodium azide, 0.05% BSA, 50% glycerol, pH7.3.

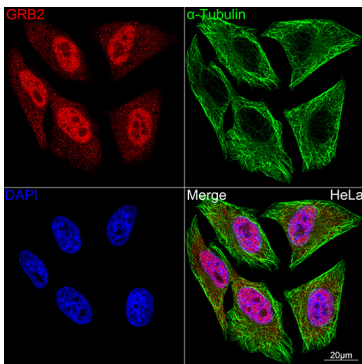
Validation Data



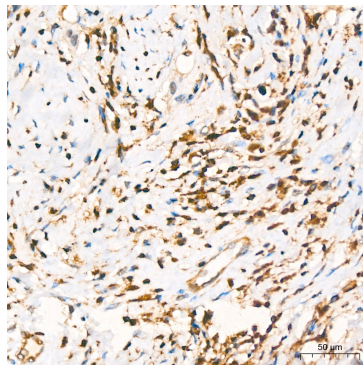
Immunoprecipitation analysis of 300 µg extracts from 293T cells using 3 µg GRB2 antibody (A19059). Western blot was performed from the immunoprecipitate using GRB2 (A19059) at a dilution of 1:1000.



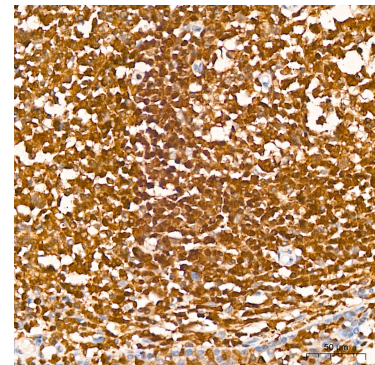
Western blot analysis of various lysates using GRB2 Rabbit mAb (A19059) at 1:1000 dilution. Secondary antibody: HRP-conjugated Goat anti-Rabbit IgG (H+L) (AS014) at 1:10000 dilution. Lysates/proteins: 25µg per lane. Blocking buffer: 3% nonfat dry milk in TBST. Detection: ECL Basic Kit (RM00020). Exposure time: 5s.



Confocal imaging of HeLa cells using GRB2 Rabbit mAb (A19059, dilution 1:100) (Red). The cells were counterstained with α-Tubulin Mouse mAb (AC012, dilution 1:400) (Green). DAPI was used for nuclear staining (blue). Objective: 100x.

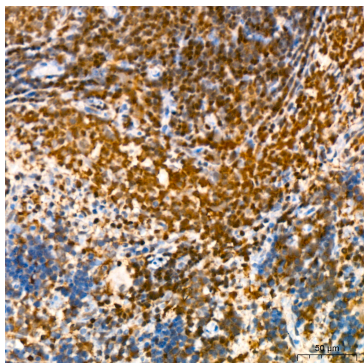


Immunohistochemistry analysis of paraffin-embedded Human breast cancer using GRB2 Rabbit mAb (A19059) at dilution of 1:200 (40x lens). High pressure antigen retrieval performed with 0.01M Citrate Buffer (pH 6.0) prior to IHC staining.



Immunohistochemistry analysis of paraffin-embedded Human tonsil using GRB2 Rabbit mAb (A19059) at dilution of 1:200 (40x lens). High pressure antigen retrieval performed with 0.01M Citrate Buffer (pH 6.0) prior to IHC staining.

Validation Data



Immunohistochemistry analysis of paraffin-embedded Rat spleen using GRB2 Rabbit mAb (A19059) at dilution of 1:200 (40x lens). High pressure antigen retrieval performed with 0.01M Citrate Bufferr (pH 6.0) prior to IHC staining.