

# [KO Validated] GSK3 $\alpha$ Rabbit mAb

Catalog No.: A19060 **KO Validated** **Recombinant** **2 Publications**

## Basic Information

### Observed MW

51kDa

### Calculated MW

51kDa

### Category

Primary antibody

### Applications

WB,IP,ELISA

### Cross-Reactivity

Human, Mouse, Rat

### CloneNo number

ARC0462

## Background

This gene encodes a multifunctional Ser/Thr protein kinase that is implicated in the control of several regulatory proteins including glycogen synthase, and transcription factors, such as JUN. It also plays a role in the WNT and PI3K signaling pathways, as well as regulates the production of beta-amyloid peptides associated with Alzheimer's disease.

## Recommended Dilutions

**WB** 1:1000 - 1:6000

**IP** 0.5 $\mu$ g-4 $\mu$ g antibody for  
200 $\mu$ g-400 $\mu$ g extracts of  
whole cells

**ELISA** Recommended starting  
concentration is 1  $\mu$ g/mL.  
Please optimize the  
concentration based on  
your specific assay  
requirements.

## Immunogen Information

### Gene ID

2931

### Swiss Prot

P49840

### Immunogen

A synthetic peptide corresponding to a sequence within amino acids 1-100 of human GSK3 $\alpha$  (P49840).

### Synonyms

GSK3 alpha; GSK3A; 3 $\alpha$

## Contact

 | 400-999-6126

 | [cn.market@abclonal.com.cn](mailto:cn.market@abclonal.com.cn)

 | [www.abclonal.com.cn](http://www.abclonal.com.cn)

## Product Information

### Source

Rabbit

### Isotype

IgG

### Purification

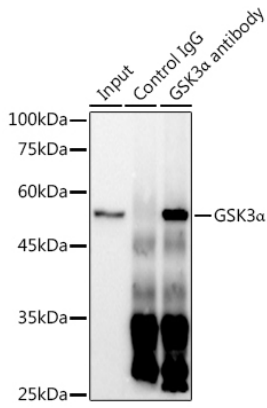
Affinity purification

### Storage

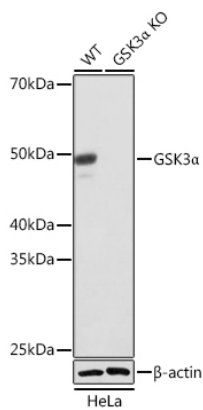
Store at -20°C. Avoid freeze / thaw cycles.

Buffer: PBS with 0.02% sodium azide,0.05% BSA,50% glycerol,pH7.3.

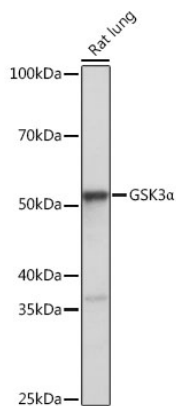
## Validation Data



Immunoprecipitation analysis of 300  $\mu$ g extracts of HeLa cells using 3  $\mu$ g GSK3 $\alpha$  antibody (A19060). Western blot was performed from the immunoprecipitate using GSK3 $\alpha$  antibody (A19060) at a dilution of 1:1000.



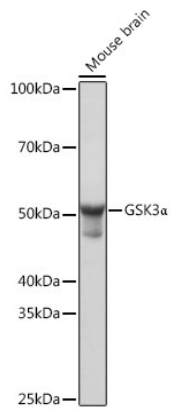
Western blot analysis of lysates from wild type (WT) and GSK3 $\alpha$  knockout (KO) HeLa cells, using [KO Validated] GSK3 $\alpha$  Rabbit mAb (A19060) at 1:1000 dilution. Secondary antibody: HRP-conjugated Goat anti-Rabbit IgG (H+L) (AS014) at 1:10000 dilution. Lysates/proteins: 25 $\mu$ g per lane. Blocking buffer: 3% nonfat dry milk in TBST. Detection: ECL Basic Kit (RM00020). Exposure time: 10s.



Western blot analysis of lysates from Rat lung, using [KO Validated] GSK3 $\alpha$  Rabbit mAb (A19060) at 1:1000 dilution. Secondary antibody: HRP-conjugated Goat anti-Rabbit IgG (H+L) (AS014) at 1:10000 dilution. Lysates/proteins: 25 $\mu$ g per lane. Blocking buffer: 3% nonfat dry milk in TBST. Detection: ECL Basic Kit (RM00020). Exposure time: 10s.

## Validation Data

---



Western blot analysis of lysates from Mouse brain, using [KO Validated] GSK3 $\alpha$  Rabbit mAb (A19060) at 1:1000 dilution.

Secondary antibody: HRP-conjugated Goat anti-Rabbit IgG (H+L) (AS014) at 1:10000 dilution.

Lysates/proteins: 25 $\mu$ g per lane.

Blocking buffer: 3% nonfat dry milk in TBST.

Detection: ECL Basic Kit (RM00020).

Exposure time: 1s.