

# Integrin beta 3 (ITGB3/CD61) Rabbit mAb

Catalog No.: A19073

Recombinant

5 Publications

## Basic Information

### Observed MW

110kDa

### Calculated MW

87kDa

### Category

Primary antibody

### Applications

ELISA, WB, IHC-P, IP, FC (intra)

### Cross-Reactivity

Human, Mouse, Rat

### CloneNo number

ARC0460

## Background

The ITGB3 protein product is the integrin beta chain beta 3. Integrins are integral cell-surface proteins composed of an alpha chain and a beta chain. A given chain may combine with multiple partners resulting in different integrins. Integrin beta 3 is found along with the alpha IIb chain in platelets. Integrins are known to participate in cell adhesion as well as cell-surface mediated signalling.

## Recommended Dilutions

WB 1:500 - 1:2000

IHC-P 1:50 - 1:200

IP 0.5µg-4µg antibody for  
200µg-400µg extracts of  
whole cells

FC (intra) 1:50 - 1:200

## Immunogen Information

### Gene ID

3690

### Swiss Prot

P05106

### Immunogen

A synthetic peptide corresponding to a sequence within amino acids 689-788 of human Integrin beta 3 (ITGB3/CD61) (P05106).

### Synonyms

GT; GT2; CD61; GP3A; BDPLT2; GPIIIa; BDPLT16; BDPLT24; Integrin beta 3 (ITGB3/CD61)

## Contact

 | 400-999-6126 | [cn.market@abclonal.com.cn](mailto:cn.market@abclonal.com.cn) | [www.abclonal.com.cn](http://www.abclonal.com.cn)

## Product Information

### Source

Rabbit

### Isotype

IgG

### Purification

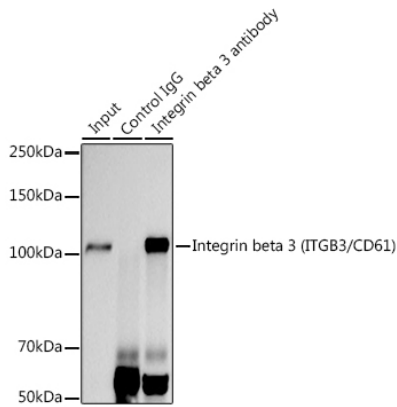
Affinity purification

### Storage

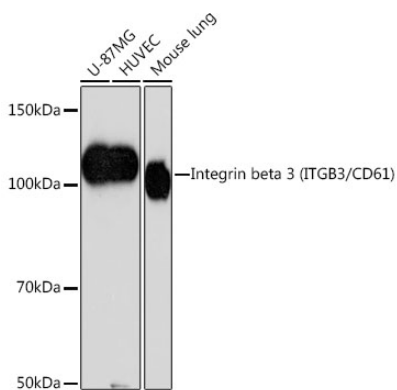
Store at -20°C. Avoid freeze / thaw cycles.

Buffer: PBS with 0.02% sodium azide, 0.05% BSA, 50% glycerol, pH7.3.

## Validation Data



Immunoprecipitation analysis of 300 µg extracts of U-87MG cells using 3 µg Integrin beta 3 (ITGB3/CD61) antibody (A19073). Western blot was performed from the immunoprecipitate using Integrin beta 3 (ITGB3/CD61) antibody (A19073) at a dilution of 1:1000.



Western blot analysis of various lysates using Integrin beta 3 (ITGB3/CD61) Rabbit mAb (A19073) at 1:1000 dilution.

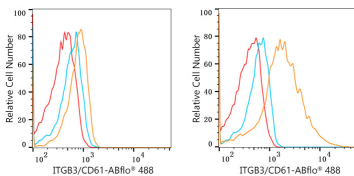
Secondary antibody: HRP Goat Anti-Rabbit IgG (H+L) (AS014) at 1:10000 dilution.

Lysates/proteins: 25µg per lane.

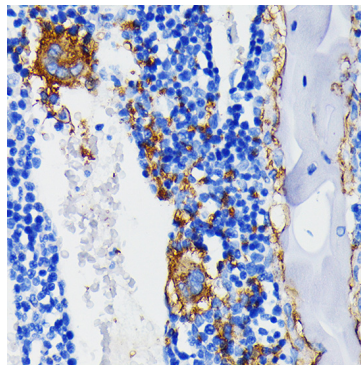
Blocking buffer: 3% nonfat dry milk in TBST.

Detection: ECL Basic Kit (RM00020).

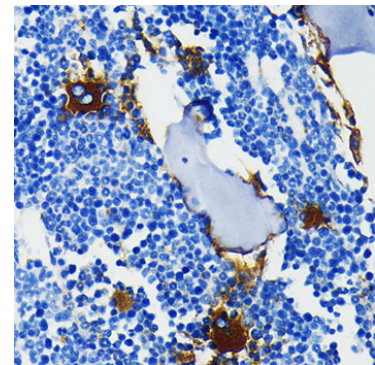
Exposure time: 90s.



Flow cytometry:  $1 \times 10^6$  U-937 cells (negative control, left) and HEL cells (right) were intracellularly-stained with Integrin beta 3 (ITGB3/CD61) Rabbit mAb (A19073, 2.5 µg/mL, orange line) or Rabbit IgG isotype control (AC042, 2.5 µg/mL, blue line), followed by FITC conjugated goat anti-rabbit pAb (1:200 dilution) staining. Non-fluorescently stained cells were used as blank control (red line).



Immunohistochemistry analysis of paraffin-embedded rat bone marrow using Integrin beta 3 (ITGB3/CD61) Rabbit mAb (A19073) at dilution of 1:100 (40x lens). Perform microwave antigen retrieval with 10 mM PBS buffer pH 7.2 before commencing with IHC staining protocol.



Immunohistochemistry analysis of paraffin-embedded mouse bone marrow using Integrin beta 3 (ITGB3/CD61) Rabbit mAb (A19073) at dilution of 1:100 (40x lens). Perform microwave antigen retrieval with 10 mM PBS buffer pH 7.2 before commencing with IHC staining protocol.