

IRS1 Rabbit mAb

Catalog No.: A19074 **Recombinant** **5 Publications**

Basic Information

Observed MW

170kDa

Calculated MW

132kDa

Category

Primary antibody

Applications

ELISA, WB

Cross-Reactivity

Human

CloneNo number

ARC0486

Background

This gene encodes a protein which is phosphorylated by insulin receptor tyrosine kinase. Mutations in this gene are associated with type II diabetes and susceptibility to insulin resistance.

Recommended Dilutions

WB 1:500 - 1:2000

Immunogen Information

Gene ID

3667

Swiss Prot

P35568

Immunogen

A synthetic peptide corresponding to a sequence within amino acids 1100-1200 of human IRS1 (P35568).

Synonyms

HIRS-1; IRS1

Contact

☎ | 400-999-6126

✉ | cn.market@abclonal.com.cn

🌐 | www.abclonal.com.cn

Product Information

Source

Rabbit

Isotype

IgG

Purification

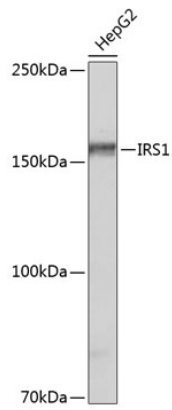
Affinity purification

Storage

Store at -20°C. Avoid freeze / thaw cycles.

Buffer: PBS with 0.02% sodium azide, 0.05% BSA, 50% glycerol, pH7.3.

Validation Data



Western blot analysis of extracts of HepG2 cells, using IRS1 antibody (A19074) at 1:500 dilution.
Secondary antibody: HRP Goat Anti-Rabbit IgG (H+L) (AS014) at 1:10000 dilution.
Lysates/proteins: 25µg per lane.
Blocking buffer: 3% nonfat dry milk in TBST.
Detection: ECL Basic Kit (RM00020).
Exposure time: 3min.