

# MMP2 Rabbit mAb

Catalog No.: A19080

Recombinant

18 Publications

## Basic Information

### Observed MW

70kDa

### Calculated MW

74kDa

### Category

Primary antibody

### Applications

ELISA,WB

### Cross-Reactivity

Human, Mouse, Rat

### CloneNo number

ARC0432

## Background

This gene is a member of the matrix metalloproteinase (MMP) gene family, that are zinc-dependent enzymes capable of cleaving components of the extracellular matrix and molecules involved in signal transduction. The protein encoded by this gene is a gelatinase A, type IV collagenase, that contains three fibronectin type II repeats in its catalytic site that allow binding of denatured type IV and V collagen and elastin. Unlike most MMP family members, activation of this protein can occur on the cell membrane. This enzyme can be activated extracellularly by proteases, or, intracellularly by its S-glutathiolation with no requirement for proteolytical removal of the pro-domain. This protein is thought to be involved in multiple pathways including roles in the nervous system, endometrial menstrual breakdown, regulation of vascularization, and metastasis. Mutations in this gene have been associated with Winchester syndrome and Nodulosis-Arthropathy-Osteolysis (NAO) syndrome. Alternative splicing results in multiple transcript variants encoding different isoforms.

## Recommended Dilutions

<b>WB</b>	1:500 - 1:2000
-----------	----------------

## Immunogen Information

### Gene ID

4313

### Swiss Prot

P08253

### Immunogen

A synthetic peptide corresponding to a sequence within amino acids 500-600 of human MMP2 (P08253).

### Synonyms

CLG4; MONA; CLG4A; MMP-2; TBE-1; MMP-II; MMP2

## Contact

		400-999-6126
--	--	--------------

		cn.market@abclonal.com.cn
--	--	---------------------------

		<a href="http://www.abclonal.com.cn">www.abclonal.com.cn</a>
--	--	--

## Product Information

### Source

Rabbit

### Isotype

IgG

### Purification

Affinity purification

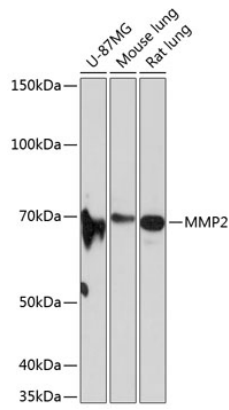
### Storage

Store at -20°C. Avoid freeze / thaw cycles.

Buffer: PBS with 0.02% sodium azide,0.05% BSA,50% glycerol,pH7.3.

## Validation Data

---



Western blot analysis of extracts of various cell lines, using MMP2 antibody (A19080) at 1:1000 dilution.  
Secondary antibody: HRP Goat Anti-Rabbit IgG (H+L) (AS014) at 1:10000 dilution.  
Lysates/proteins: 25µg per lane.  
Blocking buffer: 3% nonfat dry milk in TBST.  
Detection: ECL Basic Kit (RM00020).  
Exposure time: 90s.