

Neurofilament H Rabbit mAb

Catalog No.: A19084 **Recombinant** **5 Publications**

Basic Information

Observed MW

220kDa

Calculated MW

112kDa

Category

Primary antibody

Applications

WB,IHC-P,IF/ICC,IP,ELISA

Cross-Reactivity

Human, Mouse, Rat

CloneNo number

ARC0494

Background

Neurofilaments are type IV intermediate filament heteropolymers composed of light, medium, and heavy chains. Neurofilaments comprise the axoskeleton and functionally maintain neuronal caliber. They may also play a role in intracellular transport to axons and dendrites. This gene encodes the heavy neurofilament protein. This protein is commonly used as a biomarker of neuronal damage and susceptibility to amyotrophic lateral sclerosis (ALS) has been associated with mutations in this gene.

Recommended Dilutions

WB	1:500 - 1:3000
IHC-P	1:500 - 1:5000
IF/ICC	1:50 - 1:200
IP	0.5µg-4µg antibody for 400µg-600µg extracts of whole cells
ELISA	Recommended starting concentration is 1 µg/mL. Please optimize the concentration based on your specific assay requirements.

Contact

☎ | 400-999-6126

✉ | cn.market@abclonal.com.cn

🌐 | www.abclonal.com.cn

Immunogen Information

Gene ID

4744

Swiss Prot

P12036

Immunogen

A synthetic peptide corresponding to a sequence within amino acids 550-650 of human Neurofilament H (P12036).

Synonyms

NFH; CMT2CC; Neurofilament H

Product Information

Source

Rabbit

Isotype

IgG

Purification

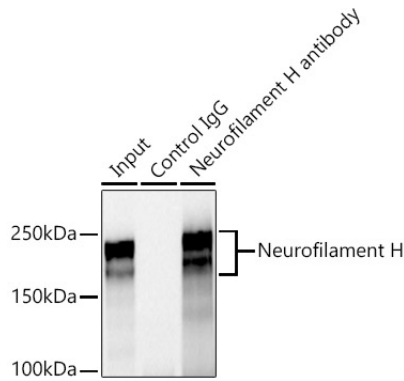
Affinity purification

Storage

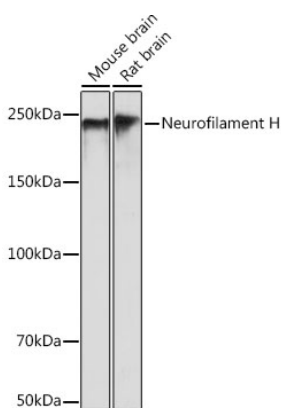
Store at -20°C. Avoid freeze / thaw cycles.

Buffer: PBS with 0.02% sodium azide,0.05% BSA,50% glycerol,pH7.3.

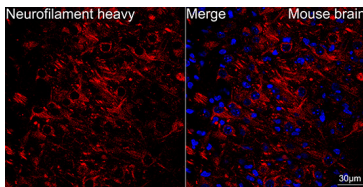
Validation Data



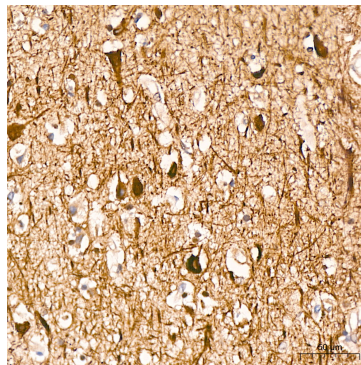
Immunoprecipitation analysis of 600 µg extracts of Rat brain cells using 3 µg Neurofilament H antibody (A19084). Western blot was performed from the immunoprecipitate using Neurofilament H antibody (A19084) at a dilution of 1:500.



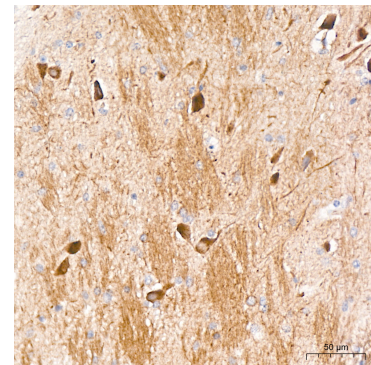
Western blot analysis of various lysates using Neurofilament H Rabbit mAb (A19084) at 1:500 dilution. Secondary antibody: HRP-conjugated Goat anti-Rabbit IgG (H+L) (AS014) at 1:10000 dilution. Lysates/proteins: 25µg per lane. Blocking buffer: 3% nonfat dry milk in TBST. Detection: ECL Basic Kit (RM00020). Exposure time: 1s.



Confocal imaging of frozen sections of mouse brain using Neurofilament H Rabbit mAb (A19084, dilution 1:100) followed by incubation with Cy3 Goat Anti-Rabbit IgG (H+L) (AS007, dilution 1:500) (Red). DAPI was used for nuclear staining (Blue). Objective: 40x. Perform microwave antigen retrieval with 0.01M citrate buffer (pH 6.0) prior to IF staining.

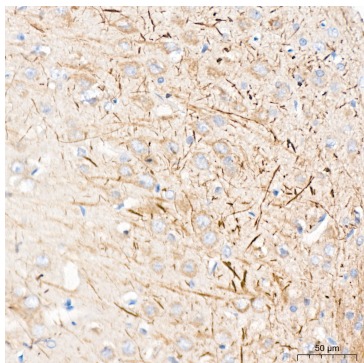


Immunohistochemistry analysis of paraffin-embedded Human brain tissue using Neurofilament H Rabbit mAb (A19084) at a dilution of 1:800 (40x lens). High pressure antigen retrieval performed with 0.01M Citrate Bufferr (pH 6.0) prior to IHC staining.



Immunohistochemistry analysis of paraffin-embedded Mouse brain tissue using Neurofilament H Rabbit mAb (A19084) at a dilution of 1:800 (40x lens). High pressure antigen retrieval performed with 0.01M Citrate Bufferr (pH 6.0) prior to IHC staining.

Validation Data



Immunohistochemistry analysis of paraffin-embedded Rat brain tissue using Neurofilament H Rabbit mAb (A19084) at a dilution of 1:800 (40x lens). High pressure antigen retrieval performed with 0.01M Citrate Bufferr (pH 6.0) prior to IHC staining.