

PAI-1/Serpin E1 Rabbit mAb

Catalog No.: A19096 **Recombinant** **3 Publications**

Basic Information

Observed MW

45kDa

Calculated MW

45kDa

Category

Primary antibody

Applications

WB,ELISA

Cross-Reactivity

Human

CloneNo number

ARC0473

Background

This gene encodes a member of the serine proteinase inhibitor (serpin) superfamily. This member is the principal inhibitor of tissue plasminogen activator (tPA) and urokinase (uPA), and hence is an inhibitor of fibrinolysis. The protein also functions as a component of innate antiviral immunity. Defects in this gene are the cause of plasminogen activator inhibitor-1 deficiency (PAI-1 deficiency), and high concentrations of the gene product are associated with thrombophilia.

Recommended Dilutions

WB 1:1000 - 1:6000

ELISA Recommended starting concentration is 1 µg/mL. Please optimize the concentration based on your specific assay requirements.

Immunogen Information

Gene ID

5054

Swiss Prot

P05121

Immunogen

A synthetic peptide corresponding to a sequence within amino acids 50-150 of human PAI-1/Serpin E1 (P05121).

Synonyms

PAI; PAI1; PAI-1; PLANH1; PAI-1/Serpin E1

Contact

☎ | 400-999-6126

✉ | cn.market@abclonal.com.cn

🌐 | www.abclonal.com.cn

Product Information

Source

Rabbit

Isotype

IgG

Purification

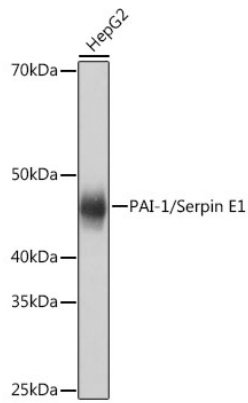
Affinity purification

Storage

Store at -20°C. Avoid freeze / thaw cycles.

Buffer: PBS with 0.02% sodium azide,0.05% BSA,50% glycerol,pH7.3.

Validation Data



Western blot analysis of lysates from HepG2 cells, using PAI-1/Serpin E1 Rabbit mAb (A19096) at 1:1000 dilution.

Secondary antibody: HRP-conjugated Goat anti-Rabbit IgG (H+L) (AS014) at 1:10000 dilution.

Lysates/proteins: 25µg per lane.

Blocking buffer: 3% nonfat dry milk in TBST.

Detection: ECL Basic Kit (RM00020).

Exposure time: 1s.