

# Lamin B1 Rabbit pAb

Catalog No.: A1910 **57 Publications**

## Basic Information

### Observed MW

68kDa/45kDa

### Calculated MW

66kDa

### Category

Primary antibody

### Applications

WB, IHC-P, IF/ICC, IP, ELISA, ChIP

### Cross-Reactivity

Human, Mouse, Rat

## Background

This gene encodes one of the two B-type lamin proteins and is a component of the nuclear lamina. A duplication of this gene is associated with autosomal dominant adult-onset leukodystrophy (ADLD). Alternative splicing results in multiple transcript variants.

## Recommended Dilutions

<b>WB</b>	1:500 - 1:1000
<b>IHC-P</b>	1:50 - 1:200
<b>IF/ICC</b>	1:50 - 1:200
<b>IP</b>	0.5µg-4µg antibody for 200µg-400µg extracts of whole cells
<b>ELISA</b>	Recommended starting concentration is 1 µg/mL. Please optimize the concentration based on your specific assay requirements.
<b>ChIP</b>	5µg antibody for 10µg-15µg of Chromatin

## Immunogen Information

### Gene ID

4001

### Swiss Prot

P20700

### Immunogen

Recombinant protein (or fragment). This information is considered to be commercially sensitive.

### Synonyms

LMN; ADLD; LMN2; LMNB; MCPH26; Lamin B1

## Product Information

### Source

Rabbit

### Isotype

IgG

### Purification

Affinity purification

### Storage

Store at -20°C. Avoid freeze / thaw cycles.

Buffer: PBS containing 50% glycerol, preserved with proclin300 or sodium azide (as specified on the Certificate of Analysis), pH 7.3.

Contact

---

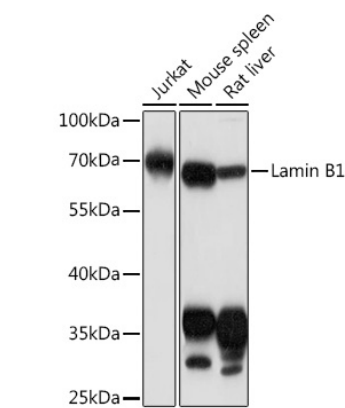
☎ | 400-999-6126

✉ | [cn.market@abclonal.com.cn](mailto:cn.market@abclonal.com.cn)

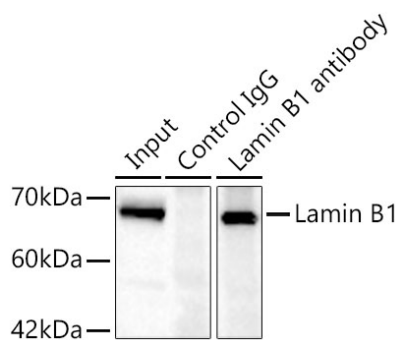
🌐 | [www.abclonal.com.cn](http://www.abclonal.com.cn)

---

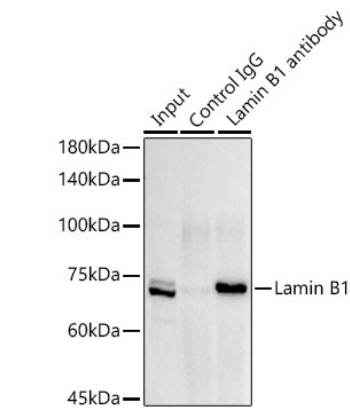
Validation Data



Western blot analysis of various lysates using Lamin B1 Rabbit pAb (A1910) at 1:1000 dilution. Secondary antibody: HRP-conjugated Goat anti-Rabbit IgG (H+L) (AS014) at 1:10000 dilution. Lysates/proteins: 25µg per lane. Blocking buffer: 3% nonfat dry milk in TBST. Detection: ECL Basic Kit (RM00020). Exposure time: 1min.

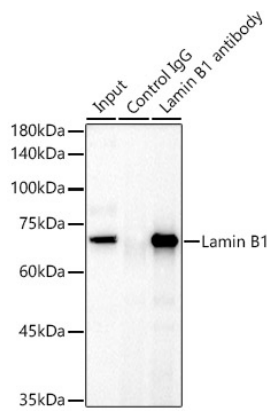


Immunoprecipitation of Lamin B1 in 300 µg extracts from Jurkat cells using 0.5 µg Lamin B1 Rabbit pAb (A1910). Western blot analysis was performed using Lamin B1 Rabbit pAb (A1910) at 1:1000 dilution.

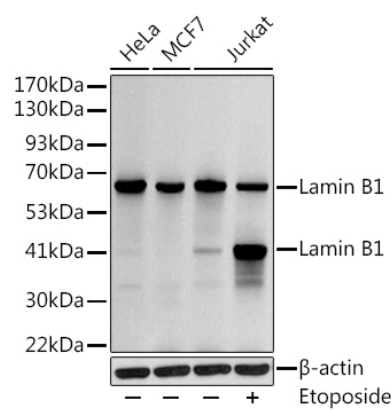


Immunoprecipitation analysis of 300 µg extracts of HeLa cells using 3 µg Lamin B1 antibody (A1910). Western blot was performed from the immunoprecipitate using Lamin B1 (A1910) at a dilution of 1:1000.

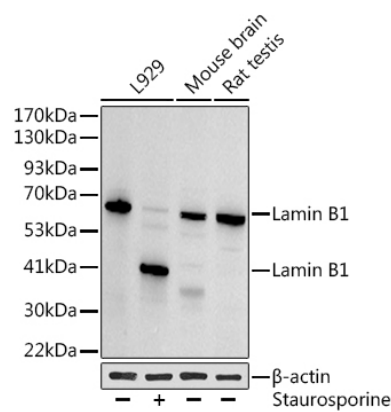
Validation Data



Immunoprecipitation analysis of 300 µg extracts of HeLa cells using 3 µg Lamin B1 antibody (A1910). Western blot was performed from the immunoprecipitate using Lamin B1 antibody (A1910) at a dilution of 1:1000.

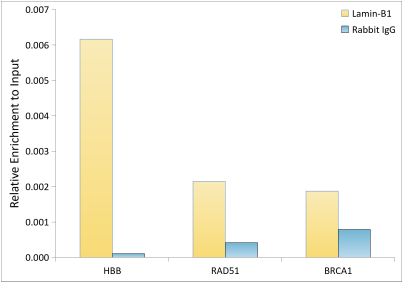


Western blot analysis of various lysates using Lamin B1 Rabbit pAb (A1910) at 1:1000 dilution. Jurkat cells were treated with Etoposide (25 µM) at 37°C for 5 hours. Secondary antibody: HRP-conjugated Goat anti-Rabbit IgG (H+L) (AS014) at 1:10000 dilution. Lysates/proteins: 25µg per lane. Blocking buffer: 3% nonfat dry milk in TBST. Detection: ECL Basic Kit (RM00020). Exposure time: 10s.

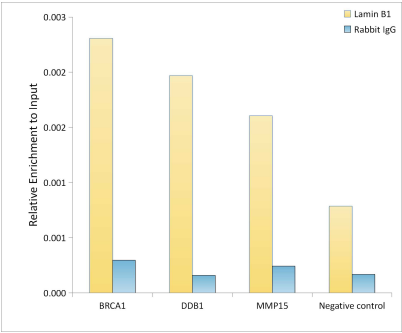


Western blot analysis of various lysates using Lamin B1 Rabbit pAb (A1910) at 1:1000 dilution. L929 cells were treated with staurosporine (1 µM) for 3 hours. Secondary antibody: HRP-conjugated Goat anti-Rabbit IgG (H+L) (AS014) at 1:10000 dilution. Lysates/proteins: 25µg per lane. Blocking buffer: 3% nonfat dry milk in TBST. Detection: ECL Basic Kit (RM00020). Exposure time: 30s.

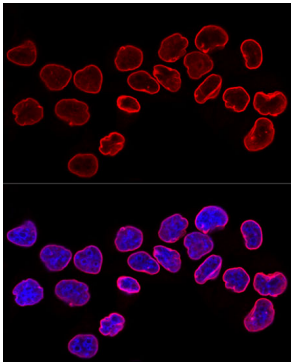
Validation Data



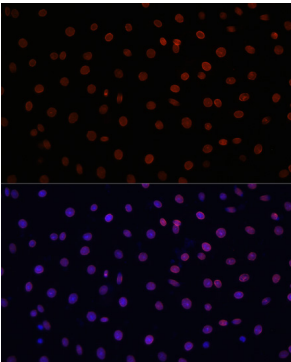
Chromatin immunoprecipitation was performed with cross-linked chromatin from HeLa, using Lamin-B1 Rabbit mAb (A1910) and rabbit IgG(AC042). The amount of immunoprecipitated DNA was checked by quantitative PCR. Histogram compares the ratio of the immunoprecipitated DNA versus the input.



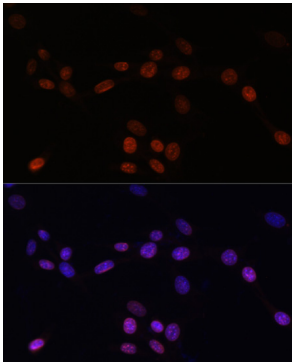
Chromatin immunoprecipitation analysis of extracts of HeLa cells, using Lamin B1 Rabbit pAb antibody (A1910) and rabbit IgG. The amount of immunoprecipitated DNA was checked by quantitative PCR. Histogram was constructed by the ratios of the immunoprecipitated DNA to the input.



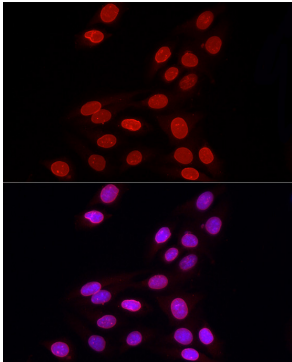
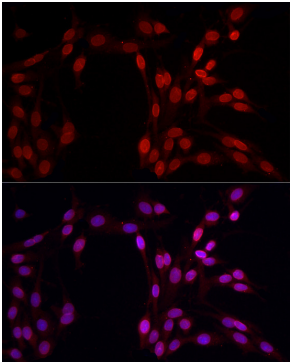
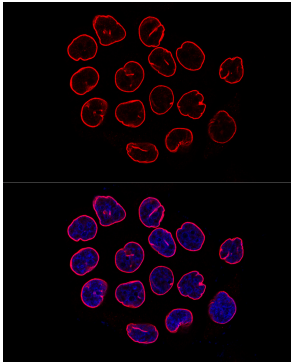
Confocal immunofluorescence analysis of HeLa cells using Lamin B1 Rabbit pAb (A1910) at dilution of 1:200. Blue: DAPI for nuclear staining.



Immunofluorescence analysis of C6 cells using Lamin B1 Rabbit pAb (A1910) at dilution of 1:100. Secondary antibody: Cy3-conjugated Goat anti-Rabbit IgG (H+L) (AS007) at 1:500 dilution. Blue: DAPI for nuclear staining.



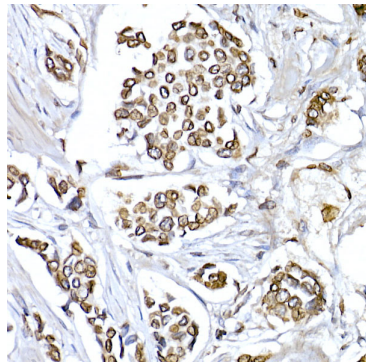
Immunofluorescence analysis of NIH/3T3 cells using Lamin B1 Rabbit pAb (A1910) at dilution of 1:100. Secondary antibody: Cy3-conjugated Goat anti-Rabbit IgG (H+L) (AS007) at 1:500 dilution. Blue: DAPI for nuclear staining.



## Validation Data

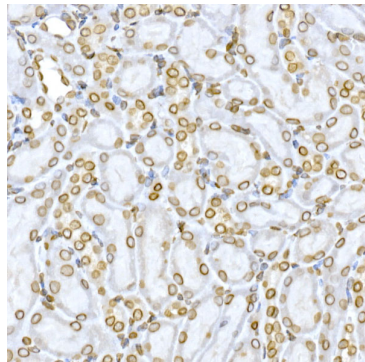
---

Confocal immunofluorescence analysis of HeLa cells using Lamin B1 Rabbit pAb (A1910) at dilution of 1:200. Blue: DAPI for nuclear staining.



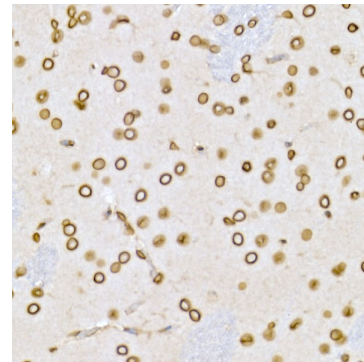
Immunohistochemistry analysis of paraffin-embedded Human breast cancer using Lamin B1 Rabbit pAb (A1910) at dilution of 1:150 (40x lens). High pressure antigen retrieval performed with 0.01M Citrate buffer (pH 6.0) prior to IHC staining.

Immunofluorescence analysis of PC-12 cells using Lamin B1 Rabbit pAb (A1910) at dilution of 1:100 (40x lens). Secondary antibody: Cy3-conjugated Goat anti-Rabbit IgG (H+L) (AS007) at 1:500 dilution. Blue: DAPI for nuclear staining.



Immunohistochemistry analysis of paraffin-embedded Mouse kidney using Lamin B1 Rabbit pAb (A1910) at dilution of 1:150 (40x lens). High pressure antigen retrieval performed with 0.01M Citrate buffer (pH 6.0) prior to IHC staining.

Immunofluorescence analysis of U2OS cells using Lamin B1 Rabbit pAb (A1910) at dilution of 1:100 (40x lens). Secondary antibody: Cy3-conjugated Goat anti-Rabbit IgG (H+L) (AS007) at 1:500 dilution. Blue: DAPI for nuclear staining.



Immunohistochemistry analysis of paraffin-embedded Rat brain using Lamin B1 Rabbit pAb (A1910) at dilution of 1:150 (40x lens). High pressure antigen retrieval performed with 0.01M Citrate buffer (pH 6.0) prior to IHC staining.