

PGP9.5/UCHL1 Rabbit mAb

Catalog No.: A19101 **Recombinant** **5 Publications**

Basic Information

Observed MW

27kDa/

Calculated MW

25kDa

Category

Primary antibody

Applications

ELISA, WB, IHC-P, IF/ICC

Cross-Reactivity

Human, Mouse, Rat

CloneNo number

ARC50371

Background

The protein encoded by this gene belongs to the peptidase C12 family. This enzyme is a thiol protease that hydrolyzes a peptide bond at the C-terminal glycine of ubiquitin. This gene is specifically expressed in the neurons and in cells of the diffuse neuroendocrine system. Mutations in this gene may be associated with Parkinson disease.

Recommended Dilutions

WB	1:500 - 1:1000
IHC-P	1:500 - 1:1000
IF/ICC	1:100 - 1:500

Immunogen Information

Gene ID

7345

Swiss Prot

P09936

Immunogen

Recombinant fusion protein containing a sequence corresponding to amino acids 1-220 of human PGP9.5/UCHL1 (NP_004172.2).

Synonyms

NDGOA; PARK5; PGP95; SPG79; PGP9.5; SPG79A; UCHL-1; Uch-L1; HEL-117; PGP 9.5; HEL-S-53; PGP9.5/UCHL1

Contact

	400-999-6126
	cn.market@abclonal.com.cn
	www.abclonal.com.cn

Product Information

Source

Rabbit

Isotype

IgG

Purification

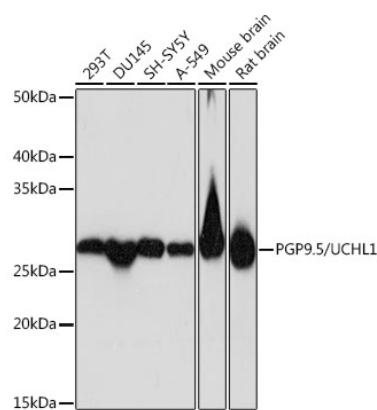
Affinity purification

Storage

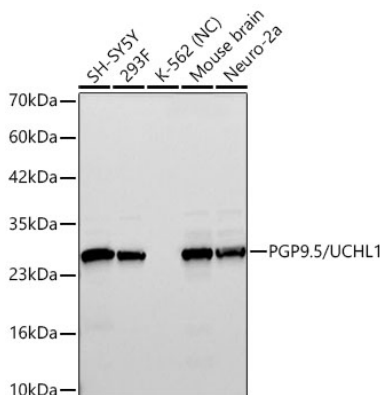
Store at -20°C. Avoid freeze / thaw cycles.

Buffer: PBS with 0.05% proclin300, 0.05% BSA, 50% glycerol, pH7.3.

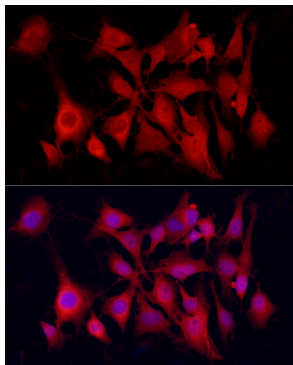
Validation Data



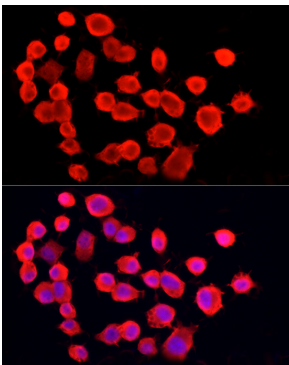
Western blot analysis of various lysates using PGP9.5/UCHL1 Rabbit mAb (A19101) at 1:1000 dilution. Secondary antibody: HRP Goat Anti-Rabbit IgG (H+L) (AS014) at 1:10000 dilution. Lysates/proteins: 25µg per lane. Blocking buffer: 3% nonfat dry milk in TBST. Detection: ECL Basic Kit (RM00020). Exposure time: 5s.



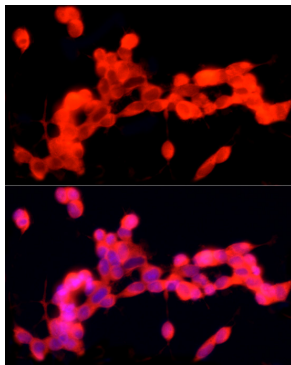
Western blot analysis of various lysates using PGP9.5/UCHL1 Rabbit mAb (A19101) at 1:120000 dilution incubated overnight at 4°C. Secondary antibody: HRP-conjugated Goat anti-Rabbit IgG (H+L) (AS014) at 1:10000 dilution. Lysates/proteins: 25 µg per lane. Blocking buffer: 3% nonfat dry milk in TBST. Detection: ECL Basic Kit (RM00020). Negative control (NC): K-562. Exposure time: 30s.



Immunofluorescence analysis of C6 cells using PGP9.5/UCHL1 Rabbit mAb (A19101) at dilution of 1:500 (40x lens). Secondary antibody: Cy3 Goat Anti-Rabbit IgG (H+L) (AS007) at 1:500 dilution. Blue: DAPI for nuclear staining.

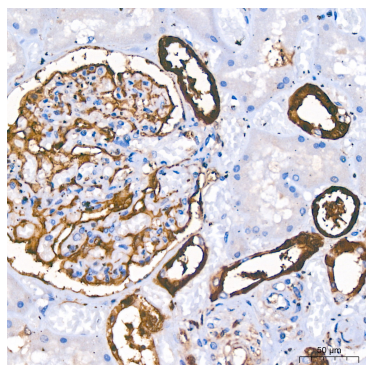


Immunofluorescence analysis of Neuro-2a cells using PGP9.5/UCHL1 Rabbit mAb (A19101) at dilution of 1:500 (40x lens). Secondary antibody: Cy3 Goat Anti-Rabbit IgG (H+L) (AS007) at 1:500 dilution. Blue: DAPI for nuclear staining.

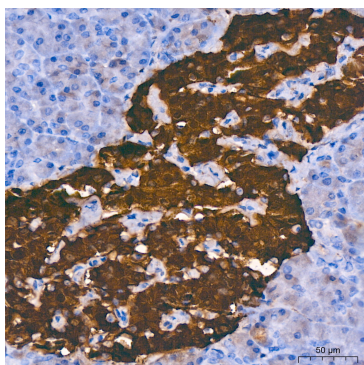


Immunofluorescence analysis of SH-5Y5Y cells using PGP9.5/UCHL1 Rabbit mAb (A19101) at dilution of 1:500 (40x lens). Secondary antibody: Cy3 Goat Anti-Rabbit IgG (H+L) (AS007) at 1:500 dilution. Blue: DAPI for nuclear staining.

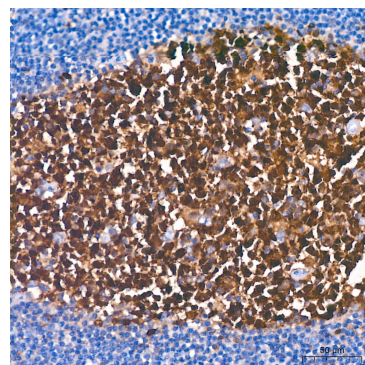
Validation Data



Immunohistochemistry analysis of PGP9.5/UCHL1 in paraffin-embedded human kidney using PGP9.5/UCHL1 Rabbit mAb (A19101) at dilution of 1:500 (40x lens). Perform high pressure antigen retrieval with 10 mM citrate buffer pH 6.0 before commencing with IHC staining protocol.



Immunohistochemistry analysis of PGP9.5/UCHL1 in paraffin-embedded human pancreas using PGP9.5/UCHL1 Rabbit mAb (A19101) at dilution of 1:500 (40x lens). Perform high pressure antigen retrieval with 10 mM citrate buffer pH 6.0 before commencing with IHC staining protocol.



Immunohistochemistry analysis of PGP9.5/UCHL1 in paraffin-embedded human tonsil using PGP9.5/UCHL1 Rabbit mAb (A19101) at dilution of 1:500 (40x lens). Perform high pressure antigen retrieval with 10 mM citrate buffer pH 6.0 before commencing with IHC staining protocol.