

SOX2 Rabbit mAb

Catalog No.: A19118

Recombinant

5 Publications

Basic Information

Observed MW

38kDa

Calculated MW

34kDa

Category

Primary antibody

Applications

ELISA,WB,IF/ICC

Cross-Reactivity

Mouse, Rat

CloneNo number

ARC0449

Background

This intronless gene encodes a member of the SRY-related HMG-box (SOX) family of transcription factors involved in the regulation of embryonic development and in the determination of cell fate. The product of this gene is required for stem-cell maintenance in the central nervous system, and also regulates gene expression in the stomach. Mutations in this gene have been associated with optic nerve hypoplasia and with syndromic microphthalmia, a severe form of structural eye malformation. This gene lies within an intron of another gene called SOX2 overlapping transcript (SOX2OT).

Recommended Dilutions

WB 1:500 - 1:2000

IF/ICC 1:50 - 1:200

Immunogen Information

Gene ID

6657

Swiss Prot

P48431

Immunogen

A synthetic peptide corresponding to a sequence within amino acids 1-100 of human SOX2 (NP_003097.1).

Synonyms

ANOP3; MCOPS3; SOX2

Contact

 | 400-999-6126 | cn.market@abclonal.com.cn | www.abclonal.com.cn

Product Information

Source

Rabbit

Isotype

IgG

Purification

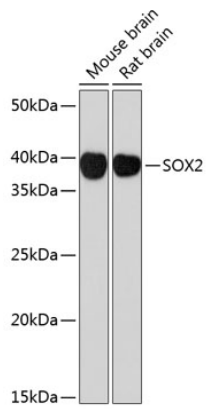
Affinity purification

Storage

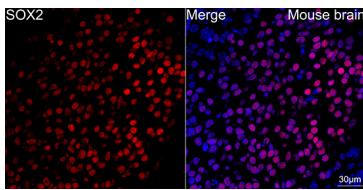
Store at -20°C. Avoid freeze / thaw cycles.

Buffer: PBS with 0.02% sodium azide,0.05% BSA,50% glycerol,pH7.3.

Validation Data



Western blot analysis of extracts of various cell lines, using SOX2 antibody (A19118) at 1:1000 dilution.
Secondary antibody: HRP Goat Anti-Rabbit IgG (H+L) (AS014) at 1:10000 dilution.
Lysates/proteins: 25µg per lane.
Blocking buffer: 3% nonfat dry milk in TBST.
Detection: ECL Basic Kit (RM00020).
Exposure time: 90s.



Confocal imaging of mouse brain(frozen section) using SOX2 Rabbit mAb (A19118,at dilution of 1:100) (Red). DAPI was used for nuclear staining (blue). Objective: 40x.Perform microwave antigen retrieval with 10 mM citrate buffer pH 6.0 before commencing with IF staining protocol.