

# TLR2 Rabbit mAb

Catalog No.: A19125 **Recombinant** **12 Publications**

## Basic Information

### Observed MW

90-105kDa

### Calculated MW

90kDa

### Category

Primary antibody

### Applications

WB,IF/ICC,IF-P,ELISA

### Cross-Reactivity

Human, Mouse

### CloneNo number

ARC0433

## Background

The protein encoded by this gene is a member of the Toll-like receptor (TLR) family which plays a fundamental role in pathogen recognition and activation of innate immunity. TLRs are highly conserved from Drosophila to humans and share structural and functional similarities. This protein is a cell-surface protein that can form heterodimers with other TLR family members to recognize conserved molecules derived from microorganisms known as pathogen-associated molecular patterns (PAMPs). Activation of TLRs by PAMPs leads to an up-regulation of signaling pathways to modulate the host's inflammatory response. This gene is also thought to promote apoptosis in response to bacterial lipoproteins. This gene has been implicated in the pathogenesis of several autoimmune diseases. Alternative splicing results in multiple transcript variants.

## Recommended Dilutions

<b>WB</b>	1:1000 - 1:2000
<b>IF/ICC</b>	1:100 - 1:400
<b>IF-P</b>	1:100 - 1:400
<b>ELISA</b>	Recommended starting concentration is 1 µg/mL. Please optimize the concentration based on your specific assay requirements.

## Contact

	400-999-6126
	cn.market@abclonal.com.cn
	<a href="http://www.abclonal.com.cn">www.abclonal.com.cn</a>

## Immunogen Information

### Gene ID

7097

### Swiss Prot

O60603

### Immunogen

Recombinant protein (or fragment). This information is considered to be commercially sensitive.

### Synonyms

TIL4; CD282; TLR2

## Product Information

### Source

Rabbit

### Isotype

IgG

### Purification

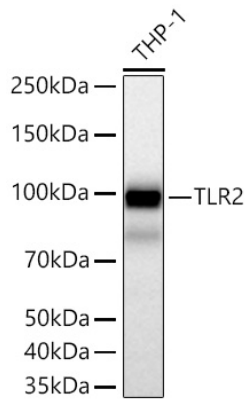
Affinity purification

### Storage

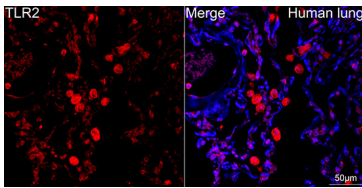
Store at -20°C. Avoid freeze / thaw cycles.

Buffer: PBS containing 50% glycerol and 0.05% BSA, preserved with proclin300 or sodium azide (as specified on the Certificate of Analysis), pH 7.3.

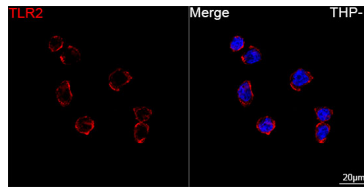
## Validation Data



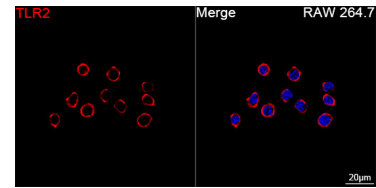
Western blot analysis of lysates from THP-1 cells using TLR2 Rabbit mAb (A19125) at 1:1000 dilution incubated overnight at 4°C.  
Secondary antibody: HRP-conjugated Goat anti-Rabbit IgG (H+L) (AS014) at 1:10000 dilution.  
Lysates/proteins: 25 µg per lane.  
Blocking buffer: 3% nonfat dry milk in TBST.  
Detection: ECL Basic Kit (RM00020).  
Exposure time: 45s.



Confocal imaging of paraffin-embedded Human lung tissue using TLR2 Rabbit mAb (A19125, dilution 1:100) followed by a further incubation with Cy3 Goat Anti-Rabbit IgG (H+L) (AS007, dilution 1:500) (Red). DAPI was used for nuclear staining (Blue). High pressure antigen retrieval performed with 0.01M Citrate Buffer (pH 6.0) prior to IF staining. Objective: 40x.



Confocal imaging of THP-1 cells using TLR2 Rabbit mAb (A19125, dilution 1:200) followed by a further incubation with Cy3 Goat Anti-Rabbit IgG (H+L) (AS007, dilution 1:500) (Red). DAPI was used for nuclear staining (Blue). Objective: 100x.



Confocal imaging of RAW 264.7 cells using TLR2 Rabbit mAb (A19125, dilution 1:200) followed by a further incubation with Cy3 Goat Anti-Rabbit IgG (H+L) (AS007, dilution 1:500) (Red). DAPI was used for nuclear staining (Blue). Objective: 100x.